



STEEL FABRICATORS PRODUCT GUIDE

FAST – SAFE – SECURE – SIMPLE

AUSTRALIA: 1300 KONNECT (566 632) | www.konnectfasteningsystems.com.au
NEW ZEALAND: 0508 KONNECT (566 632) | www.konnectfasteningsystems.co.nz

STRUCTURAL STEEL CONNECTIONS

K0 CLASS

HIGH STRENGTH CLASS 8.8 HR BOLTED ASSEMBLIES COMPLIANT TO THE LATEST STANDARD AS/NZS 1252:2016 K0 8.8 HR FOR IMPROVED RELIABILITY, PERFORMANCE AND CERTIFICATION

BOLTED ASSEMBLIES DESIGNED WITH HIGHER LEVELS OF COMPLIANCE TESTING AND DOCUMENTATION CONTROLS COMPARED TO STANDARD AS/NZS1252:1996 HI-TENSILE ASSEMBLIES.


- Compulsory verification testing guidelines supported by detailed certification.
- HR bolt assemblies directly align with the design provisions of AS4100 for ductility.
- Unique batch head markings for identification.
- Large range of diameters: M12 to M36. Choice of lengths: from 30mm to 800mm.
- Long life finish: hot dipped galvanised.
- Stock available from warehouse.

APPLICATIONS:


- Steel frame buildings & warehouses.
- Structural steel connections.
- Road & rail bridges.
- Platforms & walkways.
- Shelters & canopies.

TECHNICAL INFORMATION:

- For detailed technical information and performance reports contact your local representative or refer to the Konnect Fastening Systems® website.




K0 STRUCTURAL ASSEMBLY
HOT DIP GALVANISED
AS/NZS 1252:2016/CLASS 8.8
50 SETS
20X70MHSA
 MANUFACTURING LOT NO: 00000000
 HEAT NO: 00000000
 PO NO: 00000000



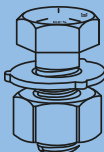
1 25002 74135 0

K0 STRUCTURAL ASSEMBLY
HOT DIP GALVANISED
AS/NZS 1252:2016/CLASS 8.8
M20X70
20X70MHSA
50 SETS



1 25002 74135 0

www.konnectfasteningsystems.com.au • www.konnectfasteningsystems.co.nz
 AU - 1300 268 327 NZ - 0800 495 866





STRUCTURAL STEEL CONNECTIONS

K2 CLASS

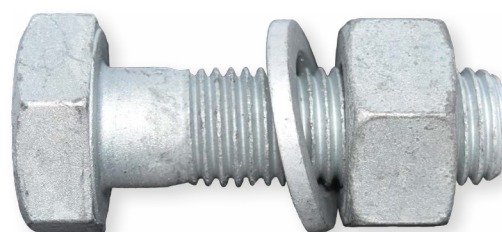
HIGH CLASS 8.8 HR BOLTED ASSEMBLIES COMPLIANT TO EUROPEAN STANDARD
EN14399:2005 K2 8.8 HR


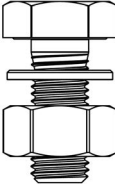
A PREMIUM BOLT DESIGN WITH HIGHER LEVELS OF COMPLIANCE TESTING AND DOCUMENTATION CONTROLS COMPARED TO K0 CLASS ASSEMBLIES.

- Bolted assemblies made to EN14399:2005 Class 8.8 HR standards which incorporate K-class testing controls comply to AS/NZS1252:2016 and can be used in the Australasian market.
- HR bolt assemblies meet the design provisions of AS4100 for ductility.
- Unique batch head markings for identification.
- Large size range: M16 to M36. Choice of lengths: from 40mm to 500mm.
- Long life finish: hot dipped galvanised.
- Goods supplied to project orders. Lead times may apply.

APPLICATIONS:

- Steel frame buildings & warehouses.
- Structural steel connections.
- Road & rail bridges.
- Platforms & walkways.
- Shelters & canopies.



HR, HDG (EN14399-3 8.8 BOLT/ (1) EN14399-3 CL.8 NUT/ (1) EN14399-5 WASHER)		
KBHK2GCM240080 PO# 58949 Heat Code: 2MT	LOT# 2015351400 Hobson Engineering 10 Clay Place Eastern Creek NSW 2766 AUSTRALIA	Quantity: 30 PCS
 935062901642		
M24x3.0Px80		
Torque Method according to EN1090-2 1st : 430 Nm 2nd : 630 Nm		
k - class K2 $k_m : 0.120$ $V_k : 0.06$		KEG NO: 1 PLT NO: 155

K1 CLASS

EXTREME CLASS 10.9 HR BOLTED ASSEMBLIES FOR MAXIMUM ENGINEERING DESIGN,
PERFORMANCE AND SAFETY. COMPLIANT TO EUROPEAN STANDARD EN14399:2005 K1 10.9 HR

HIGH PERFORMANCE BOLTED SYSTEMS THAT MAY REDUCE STRUCTURE WEIGHT AND INSTALLATION TIME WHEN COMPARED TO K2 CLASS BOLTED ASSEMBLIES.

- Dimensions, materials and mechanical properties are compliant to AS/NZS1252:2016.
- Manufactured with strict document controls for reliability, performance and safety.
- Smaller diameter Class 10.9 assemblies may replace larger diameter Class 8.8 assemblies.
- HR bolt assemblies directly align with the design provisions of AS4100 for ductility.
- Large size range: M16 to M36. Lengths: from 40mm to 500mm.
- Finish: Hot dipped galvanised.
- Goods supplied to project orders. Lead times may apply.

APPLICATIONS:

- Steel frame buildings & warehouses.
- Structural steel connections.
- Road & rail bridges.
- Platforms & walkways.
- Shelters & canopies.

TECHNICAL INFORMATION:

- For detailed technical information and performance reports contact your local representative or refer to the Konnect Fastening Systems® website.

C/Catalunya 11, 08130 Santa Perpetua de Mogoda, Barcelona, SPAIN FATOR 13 TORNILLERIA INDUSTRIAL 370 Number 1979-CPR-1979/2013 of the CE certificate Fasteners for preloading as per EN 14399-1 (k-class: K1: $0.10 \leq k_i \leq 0.16$)	
Hex. head bolt EN14399-3 M.20x50 - 10.9 - HR - tZn	
	Qty.: 200 pcs
	Lot N°: 2050/A3
	$M_A: 548.8 \text{ N}\cdot\text{m}$ $F_{p.c.d}: 171.5 \text{ KN}$



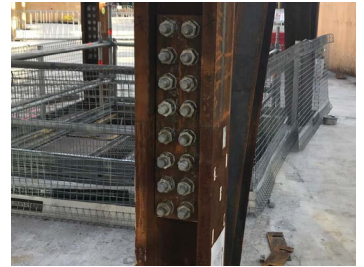
- Factory Production Control (FPC) inspection certificate.
- Initial Type Testing certificate (ITT). European conformity CE certificate.
- Tested to latest International and AS/NZS standards.
- Verification testing report = Supplier Declaration of Conformance (SDoC).
- Verification testing must be completed by an independent ILAC accredited laboratory.



MAJOR PROJECT SPECIFICATION

Australian Technology Park (ATP) – SYDNEY, NEW SOUTH WALES

95,000sqm of commercial & retail space, centrally located in the heart of Sydney.



Special thanks to Mirvac for allowing Konnect Fastening Systems® to photograph the construction site. Mirvac will be the developer, builder and a long-term owner of ATP.

Optus Stadium – PERTH, WESTERN AUSTRALIA

65,000 seat multipurpose sporting stadium and entertainment precinct.



Photo Credit – Left: Wood & Grieve Engineers – <https://wge.com.au/>; Top Right & Bottom Right: Optus Stadium – <https://optusstadium.com.au>

New Zealand International Convention Centre (NZICC) – AUCKLAND, NZ

32,500sqm GFA (Gross Floor Area) floor space. 5 levels with 3,000 people capacity.

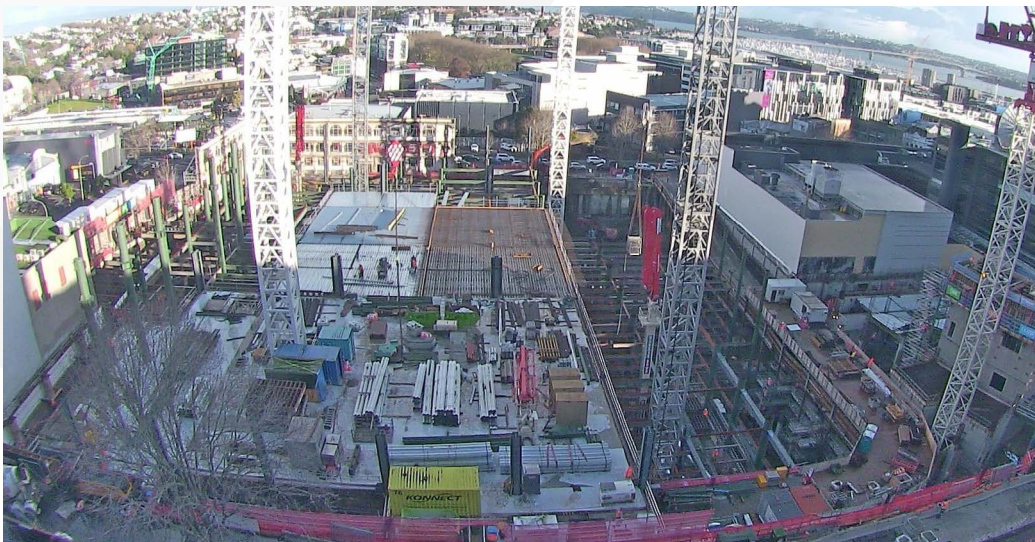


Photo Credits – New Zealand International Convention Centre (NZICC) – <http://nzicc.co.nz>

STRUCTURAL STEEL CONNECTIONS

TENSION CONTROL BOLTED CONNECTIONS

EXTREME GRADE 10.9 TENSION CONTROL BOLT SYSTEMS FOR FASTER INSTALLATION WITH SUPERIOR STRENGTH AND SAFETY

**LOWEST COST METHOD TO INSTALL FRICTION GRIP, PRELOADED BOLTS.
HIGHER PROJECT PRODUCTIVITY COMPARED TO CONVENTIONAL METHODS.**

- Quick, easy & quiet to install with lightweight electric equipment.
- Replaces conventional friction grip, preloaded bolts and swaged rivets.
- Guarantees installed tension is to specification with instant visual inspection.
- Greenkote coatings for hard wearing, eco friendly, long term corrosion resistance.
- Less worker fatigue & resources required.
- General requirements compliant to EN14399-10:2015.
- Large size range: M12 to M36. Assorted lengths available.
- Goods supplied to project orders. Lead times apply.

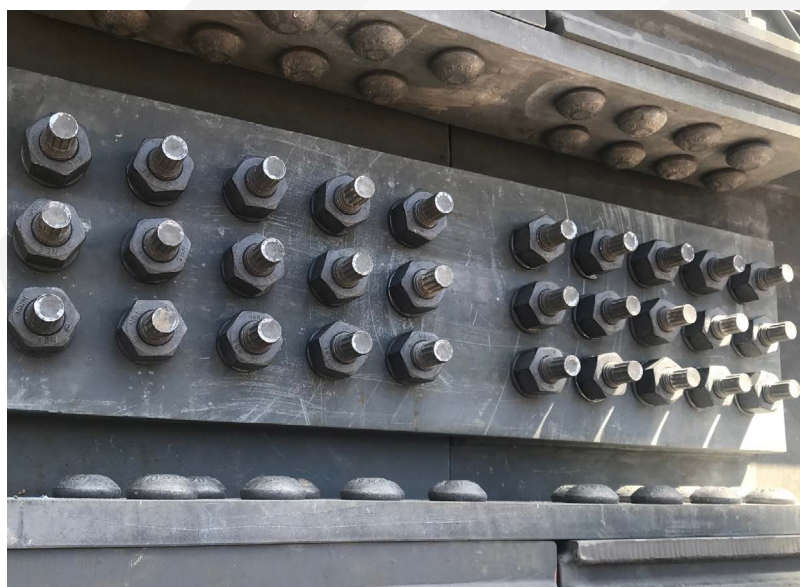


APPLICATIONS:

- Beam to column connections.
- Steel trusses, frames & splice plates.
- Road & rail bridges.
- Rail joints & rivet replacement.
- Signs & gantries.
- Repair & strengthening of structures.
- High rise buildings, tunnels & infrastructure projects.

TECHNICAL INFORMATION:

- For detailed technical information and performance reports contact your local representative or refer to the Konnect Fastening Systems® website.



TENSION CONTROL BOLT INSTALLATION TOOLS

- Lightweight electric shear wrench.
- Single person operation.
- Less operator fatigue. High user safety.
- No pneumatic or hydraulic equipment required.
- Low noise & vibration.



STRUCTURAL STEEL CONNECTIONS

TENSION CONTROL WASHERS

SQUIRTER® WASHERS WITH DIRECT TENSION INDICATORS (DTI'S) FOR FAST AND ACCURATE INSTALLATION OF BOLTED ASSEMBLIES COMPLIANT TO AS/NZS1252:2016

INSTANT VISUAL INSPECTION FOR CORRECT TENSION AND STOP POINT.

- Fast tensioning because the operator can see when to stop.
- Manufactured to ASTM F959M. Conforms to AS4100-1998 15.41(b).
- Safe for inspectors. Works with all bolt lengths.
- Lot trace number on each washer.
- Size range from M16 to M36.

APPLICATIONS:

- Beam to column connections.
- Steel trusses, frames & splice plates.
- Road & rail bridges.
- Rail joints & rivet replacement.
- Signs & gantries.
- Repair & strengthening of structures.
- High rise buildings, tunnels & infrastructure projects.

TECHNICAL INFORMATION:

- For detailed technical information and performance reports contact your local representative or refer to the Konnect Fastening Systems® website.



NORD-LOCK® BOLT SECURING SYSTEMS – STEEL CONSTRUCTION WASHERS



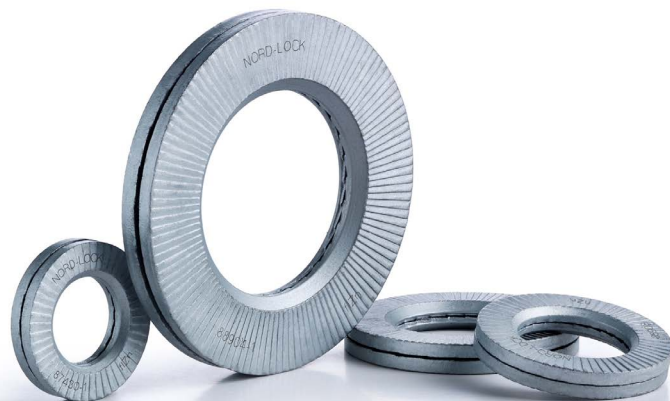
BASED ON THE LEADING NORD-LOCK WEDGE-LOCKING TECHNOLOGY, THE STEEL CONSTRUCTION (SC) WASHERS ARE DESIGNED TO SECURE BOLTED JOINTS IN STRUCTURAL STEEL APPLICATIONS THAT ARE SUBJECTED TO SEVERE VIBRATION AND DYNAMIC LOADS.

DIRECT REPLACEMENT FOR STANDARD PLAIN CHAMFERED WASHERS TO FIT HR SETS (BOLTS AND NUTS COMPLY TO EUROPEAN STANDARD EN 14399-3.

- Size range: M12 to M36 (other sizes available to special order).
- Material: Steel 1.7182 or equivalent.
- Hardness: HV1 > 465 HV through hardened.
- Coating finish: Delta Protekt.

ADVANTAGES:

- Ensures the function of the joint is maintained.
- Reduced maintenance resulting in long term cost savings.
- Quick and easy to install and remove with standard tools.
- Defined and uniform friction conditions which result in a more accurate pre-load.
- Safe and reliable locking for joints with short clamp.
- High corrosion resistance.
- Traceable batch codes and markings
- Locking function not affected by lubrication



For more technical details refer to your Konnect Fastening Systems® representative.

STRUCTURAL STEEL CONNECTIONS

BOLTED CONNECTIONS AND ASSEMBLIES

THREADED BOLT ASSEMBLIES FOR STRUCTURAL AND NON STRUCTURAL CONNECTIONS TO STEEL AND CONCRETE. QUALITY PRODUCTS COMPLIANT TO AS/NZS STANDARD AS1252

Fastening system solutions include:

- High tensile and standard strength steel assemblies.
- Choice of zinc, hot dipped galvanised and stainless steel finishes.
- A wide range of metric and imperial diameters and lengths.
- Complete bolt, nut and washer assemblies.
- Threaded rods and accessories.
- Full QA documentation available.

APPLICATIONS:

- Structural girders & beam connections.
- Steel purlins and roof trusses.
- Suspended services and tray systems.
- Fixing structural columns to concrete.
- Rigging, bracing and framework.
- Equipment chassis.



Threaded Rod

Mild steel and high tensile threaded rod available in metric or imperial and in a range of sizes & finishes.



Structural Assemblies

Fully certified structural assemblies to meet your construction requirements. Available in diameters from 12mm to 36mm in a variety of lengths, with test certificates available.



Purlin Bolts

High and low tensile purlin assemblies for fastening steel purlins. Available in diameters from 12mm to 16mm and in a length of 30mm.



Nuts, Bolts & Washers

Range of high & low tensile nuts, bolts & washers. Available in a range of finished, types and sizes; suitable for various applications.



Impact Sockets

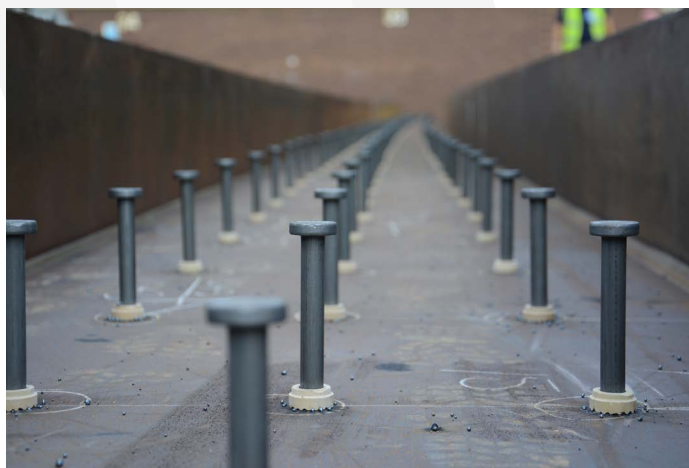
Konnect Fastening Systems® also carry a range of Impact Sockets – to assist with your installation.

SHEAR STUD CONNECTIONS FOR STEEL BEAMS

WELDED STEEL STUD COMPONENTS FOR THE CONSTRUCTION OF COMPOSITE STEEL AND CONCRETE STRUCTURES

ENABLES THE MECHANICAL INTERLOCK BETWEEN THE STEEL BEAM AND THE STRUCTURAL CONCRETE SO THAT A JOINT BEARING EFFECT IS CREATED ON A LARGE SCALE.

- Cold forged steel stud and head with ceramic ferrules.
- Welded stud complies to AS/NZS 1554.2:2003.
- Stud diameter: 19mm. Lengths from 75mm to 250mm (other diameters available. Lead times may apply).



STRUCTURAL STEEL CONNECTIONS

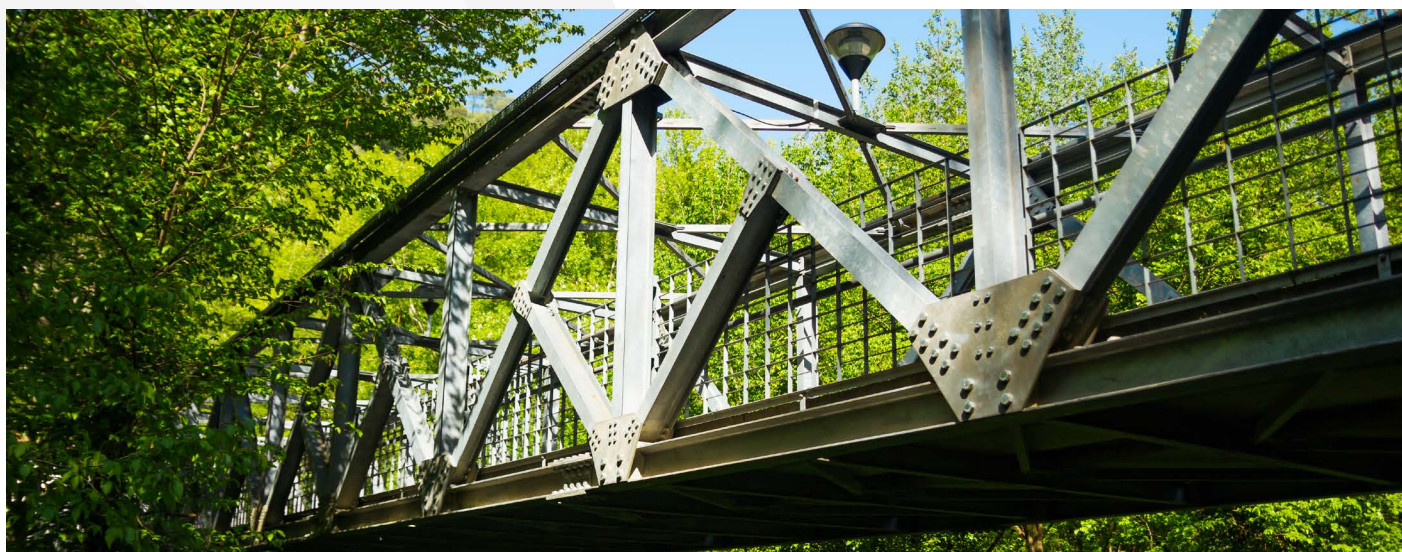
WEATHERING STEEL ASSEMBLIES

HIGH STRENGTH LOW ALLOY STEEL COMPONENTS WITH IMPROVED RESISTANCE TO ATMOSPHERIC CORROSION COMPARED TO STANDARD CARBON STEELS

WEATHERING STEEL IS A LONG LIFE, LOW MAINTENANCE ALTERNATIVE TO HOT DIPPED GALVANISING THAT FORMS A PROTECTIVE RUST PROHIBITING COATING OVER TIME.

APPLICATIONS:

- Outdoor sculptures.
- Exterior façades.
- Bridges and large steel structures.
- No painting required.
- Stable, rust like appearance.
- High copper, nickel and chromium material content.
- Goods supplied to project orders. Lead times apply. Submit your project enquiry to your local Konnect Fastening Systems® Representative.



HOLD-DOWN BOLTS

FOR STRUCTURAL AND NON-STRUCTURAL CONNECTIONS OF STEEL COLUMNS AND FRAMES TO PRECAST CONCRETE FOOTINGS

INDIVIDUAL OR MULTIPLE BOLT OPTIONS WITH STEEL PLATE ASSEMBLIES.

- Black or hot dipped galvanised finish.
- Metric bolt diameters from M12 to M30.
(Other diameters available but lead times may apply).
- Total bolt lengths from 300mm to 800mm.
(Other lengths available but lead times may apply).
- Choice of bolt thread lengths from 100mm to 200mm.



CHEMICAL ANCHORING SYSTEMS

KONV4C VINYLESTER INJECTION ANCHOR

FAST CURE, MULTI-PURPOSE STRUCTURAL ANCHOR FOR ALL CONCRETE.
NATIONAL CONSTRUCTION CODE (NCC) COMPLIANT SA TS 101:2015



KONV4C
ETAG Option 1 and Option 7
For anchoring threaded rod & rebars in cracked and uncracked concrete. ETA 17/0383
TR023 For post installed rebar connections. ETA 17/0382

- One product does all — work safely & be productive.
- Heavy duty, High Performance anchorage.
- Deep embedment anchoring. Flexible embedment depths.
- ETA approved for cracked concrete anchorage (threaded rod).
- ETA approval for Seismic C1 anchorage (threaded rod).
- ETA approved for post installed rebar connections.
- Cure time of 50 minutes at 20°C base material.
- Suitable for carbide drilled holes.
- Styrene free. No odour.
- Suitable for use in dry, wet and flooded holes.
- Vertical, horizontal and overhead applications.
- Easy dispensing in cold climates.
- Suitable for potable water use.
- Fire rated F120. VOC compliant.
- Order no: KONV4C – Box quantity 12.

APPLICATIONS:

Starter bars, structural steel plates, handrails, barriers, hold down brackets, seating. Close to edge and close to anchor fixings.



KONP4C POLYESTER INJECTION ANCHOR

GENERAL PURPOSE ANCHOR FOR MASONRY, BRICK AND CONCRETE.
CHOICE OF CARTRIDGE SIZE AND DISPENSING METHOD



KONP4C
ETAG 001-Part 1 and Part 5 Option 7
For anchoring threaded bars in uncracked concrete. ETA 17/0381

- Fast curing for quick fixture fit-off. Cure time 45 minutes at 20°C base material.
- ETA approval for uncracked concrete anchorage (threaded rod M8 to M24).
- Medium duty, high performance anchorage.
- Suitable for anchoring threaded rods and reinforcing bars.
- For solid concrete and hollow masonry substrates (with plastic sleeve).
- Vertical, horizontal and overhead applications.
- Suitable for use in dry, wet and flooded holes.
- Carbide drilled holes.
- Easy dispensing.
- VOC compliant, low odour.
- Use Standard Caulking Gun (300ml) or Coaxial Cartridge Dispenser (410ml).
- Order No: KONP4C – 410ml Cartridge.
- Order No: KONP4C300 – 300ml Cartridge. Box quantity 12.

APPLICATIONS:

Steel plates and bars, handrails, balustrades, gate posts, brackets, timber to concrete.

For hollow materials use plastic sleeves to install threaded rods. Close to edge and close to anchor fixings.



You may also need:

■ Cartridge Dispensing Gun ■ Hand Hole Blower ■ Dispensing Nozzles ■ Hole Cleaning Brushes ■ Carbide Tipped Drill Bits

THREADED STUDS

- Chisel point stud with nut and washer.
- Available in 316 Stainless Steel, Galvanised and Zinc finish.
- Steel studs Grade 5.8.
- Depth mark for correct embedment.
- External hex driver included.
- Sizes: M12 - M24 | Lengths: 160mm - 300mm.



CHEMICAL ANCHORING SYSTEMS

EXTREME PERFORMANCE PURE EPOXY ADHESIVE **Powers** ANCHOR FOR ALL CONSTRUCTION ENVIRONMENTS.

COMPLIES TO INTERNATIONAL STANDARDS AND AUSTRALIAN CONSTRUCTION CODE STANDARDS (NCC) SA TS 101:2015



- ETA approved for cracked and non cracked concrete.
- ETA approved for seismic C1 (non structural) and C2 (structural).
- ICC-ES approved for cracked and non cracked concrete.
- Deep embedment anchoring.
- Working time of 30 minutes @ 20°C, loading/cure time of 10 hours @ 20°C.
- Carbide and diamond core drilled holes (non cracked concrete).
- Horizontal, vertical and overhead applications.
- Bonds threaded rods, reinforcing bars and internal threaded sleeves.
- Low VOC & suitable for drinking water use.
- Fire rated up to 240min (rebar connections).
- Dry, wet and flooded holes.
- Close to edge and close to anchor fixings.

APPLICATIONS:

- Structural steel connections, bridges, tunnels, water infrastructure, seismic upgrades, starter bars, post installed reinforcing connections, road and rail.

PURE150 PRO



Long 24 month shelf life
from date of manufacture



Long gel/working time



Low odour level (Low VOC)



Non-sag ideal for
overhead application



Highly visible red colouration
for easy on-site inspection



Excellent performance in
hammer and diamond core
drilled holes



You may also need:

- Cartridge Dispensing Gun ■ Hand Hole Blower ■ Dispensing Nozzles ■ Hole Cleaning Brushes ■ Carbide Tipped Drill Bits

HEAVY DUTY MECHANICAL ANCHORING SYSTEMS

THROUGH BOLT STUD ANCHOR

INDEPENDENTLY TESTED

Heavy duty, torque controlled through fixture anchor for permanent anchoring in solid concrete.

- Full bolt diameter expansion anchor for superior load performance.
- Anchor design generates high shear & tensile load capacity.
- Anti-rotation expansion sleeve grips the hole for correct installation.
- Choice of lengths to suit different fixture thickness.
- Available in zinc and galvanised finish.
- Diameters: From 12mm to 20mm.
- Lengths: From 80mm to 120mm.

SUITABLE FOR:

- Barriers & building façades.
- Handrails & balustrades.
- Machinery tie down.
- Seating & racking.
- Structural steelwork & fixture plates.
- Overhead anchoring.
- Scaffolding & platforms.
- Panels & cladding.
- Safety barriers.

TECHNICAL INFORMATION:

- For detailed technical information and performance reports contact your local representative or refer to the Konnect Fastening Systems® website.



You may also need:

Rotary Drilling Machines ■ Carbide Drill Bits ■ Hole Cleaning Pump and Brushes ■ Drill Driver ■ Impact Driver

SPECIFICATION ANCHORING

POWERS® PB-PRO-S EXTREME PERFORMANCE EXPANSION ANCHOR FOR SAFE ANCHORING OF STEEL STRUCTURES TO CONCRETE

Powers



ETA-12/0174 ETAG 001-1
Option 1 cracked & uncracked concrete



NATIONAL CONSTRUCTION CODE COMPLIANT SA TS 101:2015.

A high performance torque controlled, expansion sleeve style anchor for high load capacities in tension and shear. Easy to install design that produces a tight and reliable connection.

- ETA approved for cracked and uncracked concrete.
- ETA approved for Seismic C1 anchorage. Fire rated F120.
- High strength sleeve for extreme shear loads.
- Large heavy duty washer for extreme clamp down.
- Nylon compression ring for perfect expansion.
- No spinning in hole retainer nut.

APPLICATIONS:

- Structural steel connectors to concrete.
- Steel base plates to concrete.
- Machine hold down.
- Gate fixture plates.
- Safety barriers.

TECHNICAL INFORMATION:

- For detailed technical information and performance reports contact your local representative or refer to the Konnect Fastening Systems® website.





Nothing but HEAVY DUTY.™

MAXIMISE JOB SITE PRODUCTIVITY.



Milwaukee® M18™ Jobsite Radio/Charger
(Tool only)
M18RC-0
M18



Milwaukee® M18 FUEL™ 38mm Magnetic Drill
(Tool only)
M18FMDP-0C
M18 FUEL



Milwaukee® M18 FUEL™ 1/2" High Torque Impact Wrench with Pin Detent
(Tool Only)
M18FHIWP12-0
M18 FUEL



Milwaukee® M18™ Site Light/Charger w/ ONE-KEY™ (Tool Only)
M18ONESLDP-0
M18



Milwaukee® M18 FUEL™ 5" Braking Grinder
(Tool only)
M18CAG125XPDB-0
M18 FUEL



Milwaukee® M18 FUEL™ Deep Cut Band Saw
(Tool only)
M18CBS125-0
M18 FUEL



Milwaukee® M18 FUEL™ 28mm SDS Plus Rotary Hammer
(Tool only)
M18CHP-0
M18 FUEL

CUTTING, GRINDING & FINISHING



Flexovit® Metal Grinding Wheels
Metal Depressed Centre Grinding Wheels for use on ferrous metal welds and structural steels. Excellent life and performance.



Flexovit® Ultra-Thin Cut-Off Wheels
Mega Inox Ultra-Thin Cut-Off Wheels for cutting very hard ferrous metals and stainless steel.



Flexovit® Metal Cut-Off Wheels
General Purpose Metal Cutting Wheels for use on ferrous metals with excellent life and performance.



Flexovit® Zirconia Flap Discs
Designed for grinding/finishing of welds, rust removal and deburring.



Flexovit® Low Speed Cut Off Wheels
Suitable for most 240V electric cut off machines. Fast cutting of ferrous metals including bar and tubing.



Konnnect Fastening Systems® Ultra Thin Stainless Steel Cut Off Discs
High quality, stainless steel grade & metal cutting discs ■ Well balanced ■ Lower heat generation ■ Lower machine load extends tool life ■ Lower material loss ■ Available in Metal 115mm to 230mm and stainless steel Inox 115mm to 230mm.



Konnnect Fastening Systems® Metal Cut Off Discs
High quality, stainless steel grade & metal cutting discs ■ Well balanced ■ Lower heat generation ■ Lower machine load extends tool life ■ Lower material loss ■ Available in Metal 115mm to 230mm and stainless steel Inox 115mm to 230mm.



Konnnect Fastening Systems® Thin Stainless Steel Cut Off Discs
High quality, stainless steel grade & metal cutting discs ■ Well balanced ■ Lower heat generation ■ Lower machine load extends tool life ■ Lower material loss ■ Available in Metal 115mm to 230mm and stainless steel Inox 115mm to 230mm.



Konnnect Fastening Systems® Metal Grinding Discs
The ultimate performer for mild steel and stainless steel grinding and finishing ■ Up to 15% more abrasive ■ Built-in grinding angle (15°) ■ Heavy duty reinforced backing cloth ■ Well balanced to eliminate vibration and fatigue. ■ Size: 100mm, 125mm.



Konnnect Fastening Systems® Flap Discs
■ Industrial quality ■ Depressed centre, suitable for general purpose grinding ■ Long lasting ■ Well balanced ■ Size: 100mm to 125mm.

DRILL BITS

KONNECT SDS PLUS AND SDS MAX DRIVE (4 CUTTER CARBIDE HEAD) DRILL BITS



FAST, HIGH PERFORMANCE ROTARY DRILLING INTO CONCRETE

Shallow to deep hole embeddings ■ Longer drill life than 2 cutter head drills ■ Suitable for reinforced concrete ■ SDS PLUS bits: diameters from 5mm to 25mm, length: from 110mm to 450mm ■ SDS MAX bits: diameters from 12mm to 26mm, length from 340mm to 520mm.

KONNECT SDS PLUS DRIVE (2 CUTTER CARBIDE HEAD) DRILL BITS



FOR GENERAL PURPOSE ROTARY DRILLING INTO CONCRETE

Small to medium diameter hole drilling ■ Self-centering head ■ Excellent swarf removal ■ Diameters from 5mm to 26mm ■ Length: from 110mm to 450mm.

KONNECT STRAIGHT SHANK (2 CUTTER CARBIDE HEAD) MASONRY DRILL



FOR PERCUSSION DRILLING MACHINES

■ Strengthened flute ■ High density carbide tip ■ Size: from 3mm to 18mm ■ Length: from 70mm to 160mm.

KONNECT HIGH SPEED JOBBER DRILLS



FOR DRILLING STEEL AND TIMBER

Titanium Nitride coating reduces heat and increases lubrication ■ Strengthened flute design increases durability ■ Precision tempered ■ 135° split point cuts faster and reduces wandering ■ Drills stainless steel, aluminium, mild steel and more ■ Metric sizes from 1mm to 13mm and imperial sizes from 1/64" to 1/2".

STANLEY® HAND TOOLS

STANLEY



Stanley® 6 in Classic 99° Retractable Utility Knife

Multiple blade positions allows wider usage for variety of cutting applications ■ Blade storage inside the handle.



Stanley® FATMAX® 18mm Snap-Off Knife

Auto loading spare blade saves time ■ Blade locking clamp ■ Bi-material handle and stainless steel cartridge ■ Blade snapper for speedy and safe blade snaps.



Stanley® FATMAX® 10 pack 18mm Snap-Off Blades

75% longer life, 35% sharper and 20% stronger than traditional Stanley blades ■ Ideal for paper, card, leather and most sheet materials ■ General purpose blade.



Stanley® FATMAX® Vibration Dampening Cub Hammer

Particle filled fibreglass core & antivibe shock absorbing layer reduce vibrations ■ Forged hammer head includes one bullet nose for 2 x more striking force.



Stanley® 300mm/12" Adjustable Wrench

Forged chrome vanadium steel is strong and durable ■ Handle hole for tethering, hanging or storage.



Stanley® FATMAX® 8M Tape

Mylar Polyester blade coating and Blade Armor extend blade life ■ High Impact Case with Rubber Overmold is jobsite tough ■ 32mm wide blade delivers 3.3m blade stand-out.



Stanley® 5M Tape Measure

19mm blade width for clear and legible markings ■ Tylon™ blade coating for improved durability and wear resistance ■ TRU-ZERO™ hook for precise inner and outer measurements ■ Bright yellow, easy-to-read blade.



Stanley® FATMAX® 1200mm Box Level

Heavy box beam construction ■ Accuracy of 0.5mm/m & 0.7mm/m ■ Bridged centre vial.



Stanley® FATMAX® Pro Torpedo Level

180 degree rotating vial to duplicate angles ■ Magnified centre vial for improved visibility.



Stanley® FATMAX® Pro 600mm Magnetic Box Level

Rock solid box beam construction ■ Best in class accuracy in 8 orientations of +/-0.5mm/m.



Stanley® FATMAX® 30m/100' Chalk Line Reel With 4oz Blue Chalk and Marker

3.5:1 gear ratio for fast rewind ■ 50lb breaking strain on line for long ■ Can be used vertically as a plumb bob ■ Hi-impact durable water resistant ABS case.



Stanley® 227g/8oz BLUE CHALK

Blue colour: all round colour for interior and exterior use ■ Powder specially formulated for good adhesion and high visibility.



Stanley® 10"/254mm Precision Claw Bar

Forged high carbon alloy steel for long life ■ Polished bevelled claws for precise penetration ■ Ideal for precision nail pulling and prying.



Stanley® FATMAX® 24" Wrecking Bar

Tri-lobe design ■ Slotted claw and bevelled ends improve functionality and performance ■ High-visibility, powder-coated finish.



Stanley® 15" Super Wonder Bar® Pry Bar

Extra long length for extra reach and more leverage ■ Tightly welded bend angle for more precise positioning ■ Extra long tongue for better grip and longer reach for those hard-to-get-at places.

BEAVER BRANDS

SAFETY


Konnnect Fastening Systems® Safety Glasses

Lightweight safety glasses that provide great coverage for your eyes ■ Available in a variety of lens tints, including mirrors and antifog ■ Australian Standards Medium Impact AS/NZS1337.1.


Mack® Flyer Eyewear

AS/NZS 1337.1:2010 Standards Approved ■ Anti scratch coating to reduce marking and dirt build up ■ Superior Anti fog coating for use in humid environments ■ UV400 filter for 100% UV protection outdoors ■ Polarised Lens


Frontier Leather Rigger Glove

Beige in colour and available in sizes small - 2x large.

Ninja® HPT™ GripX

The most lightweight multipurpose glove, providing superior grip and dexterity in wet, dry and oily conditions.


Frontier Croc Grip Multi-Purpose Glove Clip

Available in six colours (black, blue, orange, yellow, pink and red), in packs of 20.


Frontier Disposable Foam Ear Plugs

Uncorded or corded poly packs, with a foam material and available in packs of 5 pairs or 10 pairs.


(L) Frontier Tradie Ear Muff

Class 4 24dBA.

(R) Frontier Pro5 Ear Muff

Class 5 30dBA.


Frontier High Impact Face Shield with Chin Guard

Clear in colour, with a replacement visor available.


Frontier Clear View Hard Hat

Uv400 Stabilised and vented, with 6 point webbing hardness ■ AS/NZS 1801 Approved ■ Available in blue, clear, green, orange, pink, red, smoke and yellow.


Frontier Tuffguard Hard Hat

Vented 6 point web suspension, white in colour.



Frontier Barrier Tape 100m x 75mm roll, MOQ 20 per box.


Frontier Safety Vest

Available in yellow & orange, sizes from small to 5X large.

Frontier Traffic Cone

700mm, non-reflective.


B-Safe® Safety Harness with Quick Release Buckles

MOQ 6 pr or 1 carton.


B-Safe® Roofer's Kit

Complete Roof Worker's kit. All items comply to AS/NZS standards.


B-Safe® Full Body Harness c/w Rear & Front Fall Arrest Attachment Points

Full body harness with 2 attachment points; the mesh panel gives the harness form and ease of wear.


Beaver® 250kg & 500kg 3S Lever Block

Manufactured to AS 1418.2 & exceeds standards ■ High quality aluminium housing ■ Easy handling with low physical force on lever ■ Fully protected mechanism for low maintenance cost ■ Easy adjustment by free chaining mode

LIFTING & RIGGING


Shackle Bow Grade S Galvanised 8x10mm WLL 0.75T Each Pail Contains 50 Each

A rated shackle that meet the requirement of AS 2741. ■ Grade S Shackles are the most common shackles used in lifting applications, with a high strength to size ratio.


Multi Purpose 50mm X 9m Ratchet Tie Down Assembly With Hook & Keeper

Ratchet assemblies comply to Australian Cargo Restraint System Standards AS/NZS 4380.


Roundslings Mega 1000kg x 1.0m

Beaver Synthetic Round Lifting Sling ■ Manufactured to AS 4497. Supplied with Test Certificate. ■ All-purpose lifting sling ■ Continuous loop made from polyester yarn encased in a sleeve of polyester or nylon fabric.


Eye Nut DIN582 Gold M10 WLL 230kg.

Turnbuckle Commercial Galv Studs 16mm.

Shackle Dee Grade S Galvanised 10x11mm WLL 1.0T Each Pail Contains 30 Each

A rated shackle that meet the requirement of AS 2741. ■ Grade S Shackles are the most common shackles used in lifting applications, with a high strength to size ratio.


Multi Purpose 35mm Ratchet Tie Down Assembly

Ratchet assemblies comply to Australian Cargo Restraint System Standards AS/NZS 4380.


Roundslings Mega 2000kg x 2.0m

Beaver Synthetic Round Lifting Sling ■ Manufactured to AS 4497. Supplied with Test Certificate. ■ All-purpose lifting sling ■ Continuous loop made from polyester yarn encased in a sleeve of polyester or nylon fabric.


Eyebolt ZP Metric WLL

340kg Large Eye 12mm Lifting Eye Bolts - Metric Shouldered to DIN 580 ■ Gold Zinc Dichromate Finish ■ Conforms to AS2317-1984.


Turnbuckle Commercial

FGD E/E 10mm.

* Products listed on this page are available in selected branches only.

BRANCHES

Also available at:

Cooper Fluid Systems Mackay – 8 Micheltore Street, Paget QLD 4740 | Ph: (07) 4952 4844

Cooper Fluid Systems Kalgoorlie – 16 Atbara Street, Kalgoorlie WA 6430 | Ph: (08) 9021 4000

Cooper Fluid Systems Newman – Shed 2, 10 Pardoo Street, Newman WA 6753 | Ph: (08) 9181 5500



AUSTRALIA — 1300 KONNECT (566 632) www.konnectfasteningsystems.com.au		
QUEENSLAND	TELEPHONE	OPENING HOURS
BRENDALE 61 Kremzow Road, Brendale QLD 4500	(07) 3265 6111	Monday to Friday – 6:30AM to 5:00PM
CAIRNS Unit 2/46 Ponzo Street, Woree Business Park QLD 4870	(07) 4035 5600	Monday to Friday – 7:30AM to 4:30PM
CHINCHILLA Unit 3/4 Dwyer Court, Chinchilla QLD 4413	(07) 4672 7601	Monday to Friday – 7:30AM to 4:30PM
GLADSTONE 118 Hanson Road, Gladstone QLD 4680	(07) 4972 5511	Monday to Friday – 7:00AM to 4:00PM
GOLD COAST 34 Taree Street, West Burleigh QLD 4220	(07) 5593 6588	Monday to Friday – 7:30AM to 4:30PM
MORNINGSIDE Unit 2/525 Lytton Road, Morningside QLD 4170	(07) 3899 6700	Monday to Friday – 7:00AM to 4:00PM
MOUNT ISA 47 West Street, Mount Isa QLD 4825	(07) 4743 9788	Monday to Friday – 7:30AM to 4:30PM
PINKENBA Building 2/660 MacArthur Avenue, Pinkenba QLD 4008	(07) 3291 8200	Monday to Friday – 7:00AM to 4:00PM
SUNSHINE COAST Unit 1/53 Wises Road, Maroochydore QLD 4558	(07) 5451 0388	Monday to Friday – 7:00AM to 4:00PM
TOOWOOMBA 10 Tradewinds Court, Toowoomba QLD 4350	(07) 4633 1777	Monday to Friday – 7:30AM to 4:30PM
TOWNSVILLE 92-94 Duckworth Street, Garbutt, Townsville QLD 4810	(07) 4728 6633	Monday to Friday – 7:00AM to 4:00PM
WACOL Unit 1/1318 Boundary Road, Wacol QLD 4076	(07) 3879 3043	Monday to Friday – 7:30AM to 4:30PM
YATALA Unit 8/8-10 Christensen Rd, Stapylton QLD 4207	(07) 3291 8255	Monday to Friday – 7:00AM to 4:00PM
NEW SOUTH WALES	TELEPHONE	OPENING HOURS
ALEXANDRIA Unit 2/29-33 Bourke Road, Alexandria NSW 2015	(02) 9698 9566	Monday to Friday – 7:30AM to 4:30PM
ARTARMON Unit 1/1 Waltham Street, Artarmon NSW 2064	(02) 9438 3677	Monday to Friday – 7:30AM to 4:30PM
LISMORE Unit 1/7 Krauss Avenue, South Lismore NSW 2480	(02) 6621 9677	Monday to Friday – 7:00AM to 4:30PM
NEWCASTLE Unit 7/21 Babilala Close, Beresfield NSW 2322	(02) 4966 3002	Monday to Friday – 7:30AM to 4:30PM
ORANGE 203 Byng Street, Orange NSW 2800	(02) 6369 1622	Monday to Friday – 7:30AM to 4:30PM
TAMWORTH 60 Dampier Street, Tamworth NSW 2340	(02) 6763 8600	Monday to Friday – 7:30AM to 4:30PM
WAGGA 9 Dobney Avenue, Wagga NSW 2650	(02) 6925 6700	Monday to Friday – 7:30AM to 4:30PM
WETHERILL PARK Unit 1/429 Victoria Street, Wetherill Park NSW 2164	(02) 9616 6100	Monday to Friday – 7:30AM to 4:30PM
WOLLONGONG Unit 1/7 Waverley Drive, Unanderra NSW 2526	(02) 4225 3744	Monday to Friday – 7:30AM to 4:30PM
AUSTRALIAN CAPITAL TERRITORY	TELEPHONE	OPENING HOURS
CANBERRA Unit 2/10 Maryborough Street, Fyshwick ACT 2609	(02) 6192 6000	Monday to Friday – 7:30AM to 4:30PM
VICTORIA	TELEPHONE	OPENING HOURS
CAMPBELLFIELD Unit 2/1730 Hume Highway, Campbellfield VIC 3061	(03) 9357 2755	Monday to Friday – 7:30AM to 4:30PM
DANDENONG Unit 6/234-238 Frankston Dandenong Road, Dandenong VIC 3175	(03) 9793 3644	Monday to Friday – 7:30AM to 4:30PM
GEELONG NORTH 18A Tarkin Court, Bell Park, Geelong VIC 3215	(03) 5277 2063	Monday to Friday – 7:00AM to 4:30PM
LAVERTON Unit 4/151 Doherty Road, Laverton VIC 3026	(03) 9368 7955	Monday to Friday – 7:30AM to 4:30PM
MILDURA 53 Seventh Street East, Mildura VIC 3500	(03) 5021 2311	Monday to Friday – 7:30AM to 4:30PM
SHEPPARTON 84 Benalla Road, Shepparton VIC 3630	(03) 5831 2577	Monday to Friday – 7:30AM to 4:30PM
SOUTH MELBOURNE 188 Kings Way, South Melbourne VIC 3205	(03) 9368 7930	Monday to Friday – 7:30AM to 4:30PM
TASMANIA	Telephone	OPENING HOURS
BURNIE 127 Bass Highway, Coee TAS 7320	(03) 6431 7077	Monday to Friday – 7:30AM to 4:30PM
HOBART 71B Charles Street, Moonah TAS 7009	(03) 6272 8794	Monday to Friday – 7:30AM to 4:30PM
LAUNCESTON 101B Invermay Road, Launceston TAS 7250	(03) 6334 9102	Monday to Friday – 7:30AM to 4:30PM
SOUTH AUSTRALIA	TELEPHONE	OPENING HOURS
LONSDALE 6 Aldershot Road, Lonsdale SA 5160	(08) 8326 4122	Monday to Friday – 8:00AM to 4:30PM
WINGFIELD 13 Rosberg Road, Wingfield SA 5013	(08) 8300 8700	Monday to Friday – 7:30AM to 4:30PM
WESTERN AUSTRALIA	TELEPHONE	OPENING HOURS
BIBRA LAKE Unit 2/13 Discovery Drive, Bibra Lake WA 6163	(08) 9331 2455	Monday to Thursday – 7:30AM to 4:30PM; Friday – 7:30AM to 4:00PM
BUNBURY Corner Profit Street & Wilson Road, Bunbury WA 6230	(08) 9724 2500	Monday to Thursday – 7:30AM to 4:30PM; Friday – 7:00AM to 4:00PM
KWINANA 36 Mandurah Road, Kwinana WA 6167	(08) 9439 7000	Monday to Thursday – 7:30AM to 4:30PM; Friday – 7:30AM to 3:30PM
OSBORNE PARK Unit 1B/15 Hector Street West, Osborne Park WA 6017	(08) 9244 4555	Monday to Thursday – 7:00AM to 4:00PM; Friday – 7:00AM to 3:30PM
WANGARA Unit 5/1 Dellamarta Road, Wangara WA 6065	(08) 9276 0100	Monday to Thursday – 7:00AM to 4:00PM; Friday – 7:00AM to 3:30PM
WELSHPOOL Unit 5/9-13 Kewdale Road, Welshpool WA 6106	(08) 9350 3600	Monday to Thursday – 7:00AM to 4:30PM; Friday – 7:00AM to 4:00PM
NORTHERN TERRITORY	TELEPHONE	OPENING HOURS
WINNELLIE 20 Mataram Street, Winnellie NT 0820	(08) 8947 1359	Monday to Friday – 7:30AM to 4:00PM
NEW ZEALAND — 0508 KONNECT (566 632) www.konnectfasteningsystems.co.nz		
NORTH ISLAND	TELEPHONE	OPENING HOURS
WHANGAREI Unit 2, 17 Dyer Street, Whangarei 0110	(09) 438 1080	Monday to Friday – 7:30AM to 4:30PM
ALBANY Unit K, 118 Bush Road, Rosedale, Auckland 0632	(09) 477 0480	Monday to Friday – 7:30AM to 4:30PM
AUCKLAND CBD Unit 3, 114 Nelson Street, Auckland City 1010	(09) 477 0484	Monday to Friday – 7:30AM to 4:00PM
EAST TAMAKI 11 Bruce Roderick Drive, East Tamaki, Auckland 2013	(09) 276 0760	Monday to Friday – 7:00AM to 4:30PM
HAMILTON 31 Tawn Place, Te Rapa, Hamilton 3200	(07) 848 1290	Monday to Friday – 7:30AM to 4:30PM
MT MAUNGANUI Unit 4, 23 Tukorako Drive, Mt Maunganui 3116	(07) 929 6849	Monday to Friday – 7:30AM to 4:30PM
NAPIER 62 Austen Street, Onekawa, Napier 4110	(06) 873 9500	Monday to Friday – 7:30AM to 4:30PM
NEW PLYMOUTH 53A Hurlstone Drive, New Plymouth 4312	(06) 769 6745	Monday to Friday – 7:30AM to 4:30PM
WELLINGTON 18 Centennial Highway, Ngauranga Gorge, Wellington 6035	(04) 499 3292	Monday to Friday – 7:30AM to 4:30PM
SOUTH ISLAND	TELEPHONE	OPENING HOURS
NELSON Unit 2B, 7 Nayland Road, Stoke, Nelson 7011	(03) 547 2681	Monday to Friday – 7:30AM to 5:00PM
CHRISTCHURCH CBD Shop 1, 574 Colombo St, Christchurch Central, Christchurch 8011	(03) 339 1293	Monday to Friday – 7:00AM to 4:00PM
CHRISTCHURCH 117 Wrights Road, Addington, Christchurch 8024	(03) 338 8825	Monday to Friday – 7:30AM to 5:00PM
TIMARU Unit 1, 26 Washdyke Flat Rd, Timaru 7910 NZ	(03) 927 2514	Monday to Friday – 8:00AM to 5:00PM
DUNEDIN Corner Crawford and Gordon Streets, Dunedin 9016	(03) 477 7369	Monday to Friday – 7:30AM to 4:30PM

CURRENT AS OF 24/07/2018. Branch Listings may have changed from time and date of printing.



If pricing is included in this publication, all prices are valid for the catalogue period. However, Coventry Group Ltd (CGL) trading as Konnect Fastening Systems, reserves the right to amend prices in certain circumstances without further notice. Delivery charges apply for delivery of products in this catalogue. Items shown in this catalogue are not be stocked in all listed locations and may need to be ordered upon customer request. CGL cannot be responsible for the unavailability of such products as a consequence of the failure of suppliers to deliver at all or on time through any circumstances beyond its control E. & O. E. Due to continual product improvement some products may differ from images featured in the catalogue. Whilst every care has been taken to ensure all information and technical data is accurate, CGL will not be liable to any purchaser that relies on any matter, fact or representation, nor will it be liable for subsequent damage or loss resulting from the use of any information contained in the publication. Purchasers should make enquiries prior to placing an order regarding the fitness and suitability of the products advertised. Images shown are for publication artwork purposes and may differ on physical products and artworks.