



## **STRUT & CABLE**

**CHANNEL STRUT | PIPE SUPPORTS | FITTINGS & HARDWARE | CABLE TRAYS**

VERSION 2022-07

**1300 KONNECT (566 632) | [KONNECTFASTENINGSYSTEMS.COM.AU](https://www.konnectfasteningsystems.com.au)**



## CONTENTS

▪ <b>CHANNEL STRUT</b> .....	<b>04</b>
▪ SLOTTED CHANNEL STRUT .....	04
▪ <b>CABLE TRAY</b> .....	<b>05</b>
▪ HOLD DOWN BRACKET .....	05
▪ RADIUS PLATE .....	05
▪ TRAY GUSSET .....	05
▪ LINK PLATE .....	05
▪ SPLICE PLATE .....	05
▪ CHANNEL SPRING NUT .....	06
▪ <b>BRACKET</b> .....	<b>06</b>
▪ 90° DEG ANGLE BRACKET WITH 2X HOLES .....	06
▪ ADJUSTABLE HINGE WITH 2X HOLES .....	06
▪ BACK TO BACK CANTILEVER BRACKET .....	06
▪ 90° DEG ANGLE BRACKET WITH 4X HOLES .....	06
▪ ADJUSTABLE HINGE WITH 4X HOLES .....	06
▪ CANTILEVER BRACKET .....	07
▪ FLAT PLATE .....	07
▪ 90° ANGLE BRACKETS .....	07
▪ 90° ANGULAR "Z" BRACKETS .....	08
▪ FLOOR BRACKETS .....	09
▪ ROD HANGER CENTRE TYPE .....	09
▪ ROD HANGER VERTICAL TYPE .....	09
▪ ROD HANGER HORIZONTAL TYPE .....	09
▪ BEAM CLAMPS .....	09
▪ SLOTTED ANGLE .....	10
▪ LIGHT DUTY PIPE SUPPORT .....	10
▪ POWER TOOLS .....	11
▪ <b>ACCESSORIES</b> .....	<b>12</b>
▪ ABRASIVES .....	13
▪ <b>FASTENERS</b> .....	<b>14</b>
▪ SLEEVE ANCHORS (HEX HEAD) .....	14
▪ THROUGH BOLTS .....	14
▪ SCREW BOLTS .....	14
▪ THREADED ROD HANGERS .....	14
▪ HEX NUTS .....	15
▪ MUDGUARD WASHERS .....	15
▪ ROD COUPLERS - LOW TENSILE .....	15
▪ SPRING WASHERS - FLAT SECTION .....	15
▪ THREADED ROD .....	15
▪ NOTES .....	17





**Konnect Fastening Systems is an industry leader in Fastening Systems & Industrial Supplies across Australia and New Zealand, with a proud history of servicing a wide range of industries.**

With an immense breadth and depth of product as well as ISO9001 Quality Management Systems certification for several of our Australian Distribution Centres, Konnect stands out as a premier fastener and industrial solution specialist.

We place a great emphasis on our ability to deliver:

- Quality Products
- Prompt and Accurate Delivery
- Quality Customer Service
- Technical Assistance
- Specially Manufactured Products

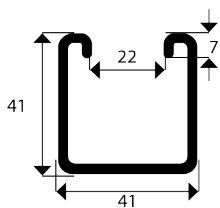
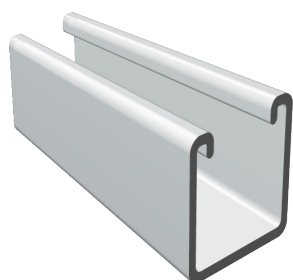
As Konnect continues to grow throughout Australia & New Zealand, we have further enhanced our product offering through the release of a Strut and Cable Tray range to core users.

Our Strut & Cable Tray solutions are designed for the plumbing, heating, ventilation and electrical industries, along with many other mechanical applications.





▶ CHANNEL STRUT

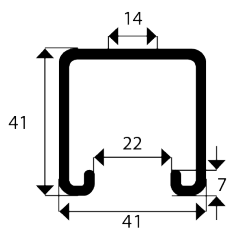
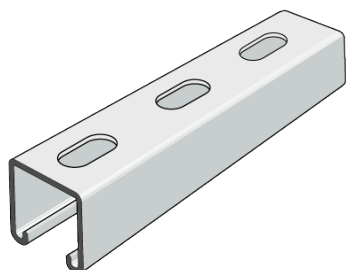


Mass: 2.59kg/m

Part Number	Description	Finish
KP1000-HG	41mm x 41mm x 2.5mm x 6m channel strut	Hot Dip Galvanised
KP1000-GB	41mm x 41mm x 2.5mm x 6m channel strut	Galvabond

Load Rating Max				
500MM	1000MM	1500MM	2000MM	3000MM
▼	▼	▼	▼	▼
808KG	402KG	266KG	197KG	127KG

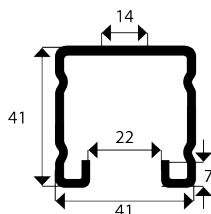
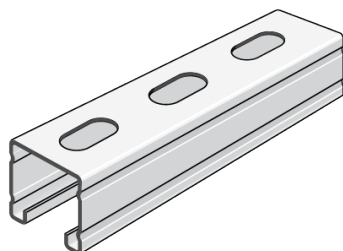
▶ SLOTTED CHANNEL STRUT



Mass: 2.4kg/m

Part Number	Description	Finish
KP1000T-HG	41mm x 41mm x 2.5mm x 6m slotted channel strut	Hot Dip Galvanised
KP1000T-GB	41mm x 41mm x 2.5mm x 6m slotted channel strut	Galvabond

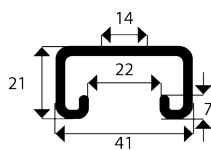
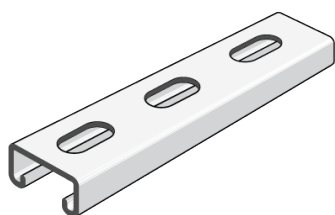
Load Rating Max				
500MM	1000MM	1500MM	2000MM	3000MM
▼	▼	▼	▼	▼
763KG	380KG	251KG	186KG	120KG



Mass: 1.62kg/m

Part Number	Description	Finish
KP2000T-GB	41mm x 41mm x 1.6mm x 6m slotted channel strut	Galvabond

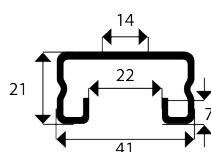
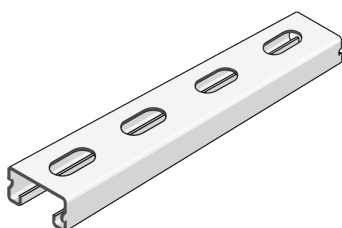
Load Rating Max				
500MM	1000MM	1500MM	2000MM	3000MM
▼	▼	▼	▼	▼
534KG	266KG	176KG	130KG	84KG



Mass: 1.55kg/m

Part Number	Description	Finish
KP3300T-GB	41mm x 21mm x 2.5mm x 6m slotted channel strut	Galvabond

Load Rating Max				
500MM	1000MM	1500MM	2000MM	3000MM
▼	▼	▼	▼	▼
242KG	120KG	78KG	57KG	35KG



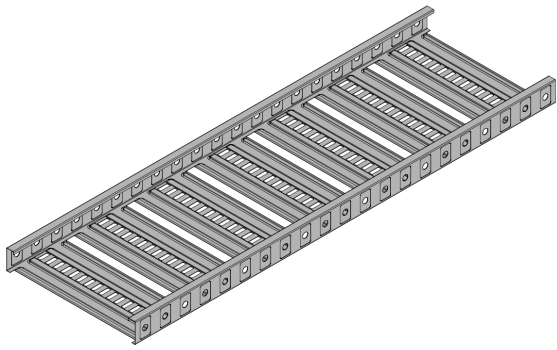
Mass: 1.08kg/m

Part Number	Description	Finish
KP4000T-GB	41mm x 21mm x 1.6mm x 6m slotted channel strut	Galvabond

Load Rating Max				
500MM	1000MM	1500MM	2000MM	3000MM
▼	▼	▼	▼	▼
179KG	88KG	58KG	42KG	25KG



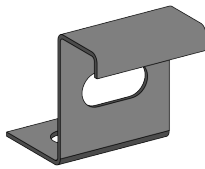
▶ CABLE TRAY



Part Number	Description	Finish
<b>KT3-150GB</b>	150mm x 3m cable tray	Galvabond
<b>KT3-300GB</b>	300mm x 3m cable tray	Galvabond
<b>KT3-450GB</b>	450mm x 3m cable tray	Galvabond

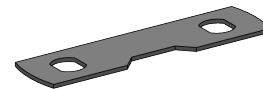
Load Rating & Deflection			
1.0M	1.5M	2.0M	3.0M
▼	▼	▼	▼
1.0M	1.5M	2.0M	3.0M
291KG	129KG	73KG	32KG
4MM	9MM	15MM	34MM

▶ HOLD DOWN BRACKET



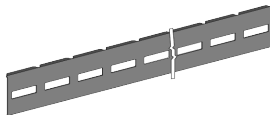
Part Number	Description	Finish
<b>KT3HDB</b>	KT3 - 50mm Hold Down Bracket	Galvabond

▶ LINK PLATE



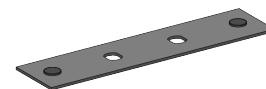
Part Number	Description	Finish
<b>KT3LP</b>	KT3 - 50mm Link Plate	Galvabond

▶ RADIUS PLATE



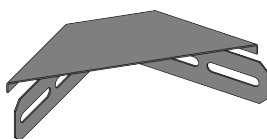
Part Number	Description	Finish
<b>KT3RP</b>	KT3 - 50mm Radius Plate	Galvabond

▶ SPLICE PLATE



Part Number	Description	Finish
<b>KT3SP</b>	KT3 - 50mm Splice Plate	Galvabond

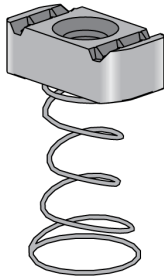
▶ TRAY GUSSET



Part Number	Description	Finish
<b>KT3TG</b>	KT3 - Tray Gusset	Galvabond

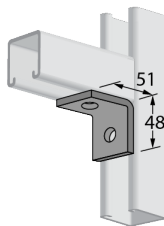


▶ CHANNEL SPRING NUT



Part Number	Description	Finish
KP1007	M8 channel spring nut	Zinc
KP1008	M10 channel spring nut	Zinc
KP1010	M12 channel spring nut	Zinc
KP1007H	M8 channel spring nut HDG	Hot Dip Galvanised
KP1008H	M10 channel spring nut HDG	Hot Dip Galvanised
KP1010H	M12 channel spring nut HDG	Hot Dip Galvanised
KP1006SS	M6 channel spring nut SS316	Stainless Steel G316/A4
KP1007SS	M8 channel spring nut SS316	Stainless Steel G316/A4
KP1008SS	M10 channel spring nut SS316	Stainless Steel G316/A4
KP1013SS	M12 channel spring nut SS316	Stainless Steel G316/A4

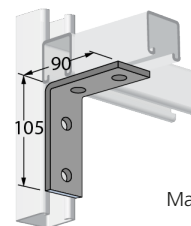
▶ 90° DEG ANGLE BRACKET WITH 2X HOLES



Mass: 14.4Kg/100

Part Number	Description	Finish
KP1026H	90 deg angle bracket with 2x holes	Hot Dip Galvanised

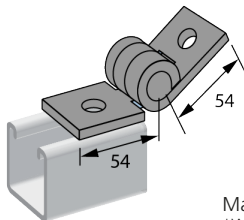
▶ 90° DEG ANGLE BRACKET WITH 4X HOLES



Mass: 27.5Kg/100

Part Number	Description	Finish
KP1325H	90 deg angle bracket with 4x holes	Hot Dip Galvanised

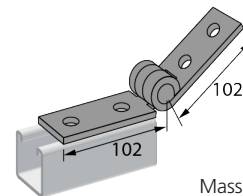
▶ ADJUSTABLE HINGE WITH 2X HOLES



Mass: 31Kg/100  
\*WITH REMOVABLE PIN

Part Number	Description	Finish
KP1843H	Adjustable Hinge with 2x holes	Hot Dip Galvanised

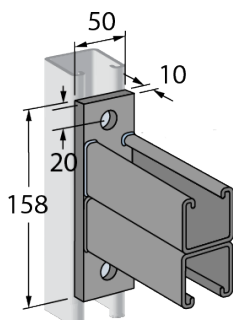
▶ ADJUSTABLE HINGE WITH 4X HOLES



Mass: 49Kg/100  
\*WITH REMOVABLE PIN

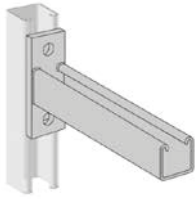
Part Number	Description	Finish
KP1354H	Adjustable Hinge with 4x holes	Hot Dip Galvanised

▶ BACK TO BACK CANTILEVER BRACKET

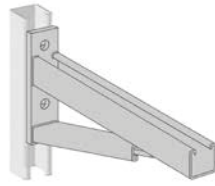


Part Number	Description	Finish
KP2542H	305mm Back to back cantilever bracket	Hot Dip Galvanised
KP2543H	460mm Back to back cantilever bracket	Hot Dip Galvanised
KP2544H	610mm Back to back cantilever bracket	Hot Dip Galvanised
KP2545H	760mm Back to back cantilever bracket	Hot Dip Galvanised
KP2546H	915mm Back to back cantilever bracket	Hot Dip Galvanised

► CANTILEVER BRACKET



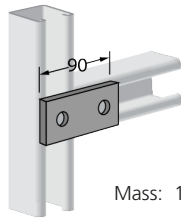
KP26 Series



KPCL Series

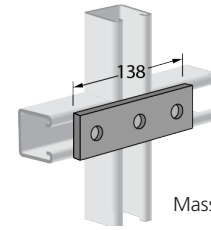
Part Number	Description	Finish
<b>KPCL150H</b>	Cantilever Bracket 320mm	Hot Dip Galvanised
<b>KPCL300H</b>	Cantilever Bracket 470mm	Hot Dip Galvanised
<b>KPCL450H</b>	Cantilever Bracket 635mm	Hot Dip Galvanised
<b>KPCL600H</b>	Cantilever Bracket 780mm	Hot Dip Galvanised
<b>KP2663250</b>	Cantilever Bracket 250mm	Hot Dip Galvanised
<b>KP2663400</b>	Cantilever Bracket 400mm	Hot Dip Galvanised
<b>KP2663550</b>	Cantilever Bracket 550mm	Hot Dip Galvanised
<b>KP2663700</b>	Cantilever Bracket 700mm	Hot Dip Galvanised

► FLAT PLATE



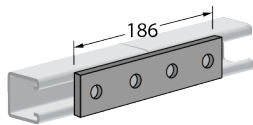
Mass: 13.4Kg/100

Part Number	Description	Finish
<b>KP1065H</b>	2 hole flat Bracket	Hot Dip Galvanised



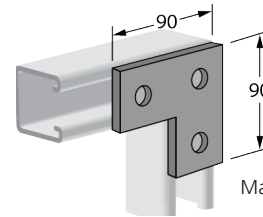
Mass: 20Kg/100

Part Number	Description	Finish
<b>KP1066H</b>	3 hole flat Bracket	Hot Dip Galvanised



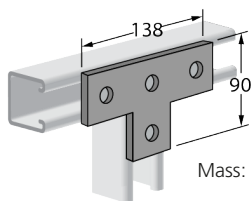
Mass: 26.7Kg/100

Part Number	Description	Finish
<b>KP1067H</b>	4 hole joiner Bracket	Hot Dip Galvanised



Mass: 20.9Kg/100

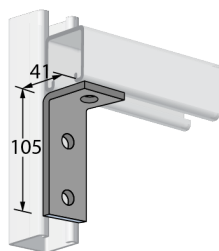
Part Number	Description	Finish
<b>KP1036H</b>	3 Hole L Bracket	Hot Dip Galvanised



Mass: 29.2Kg/100

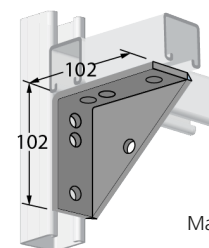
Part Number	Description	Finish
<b>KP1031H</b>	4 hole T Bracket	Hot Dip Galvanised

► 90° ANGLE BRACKETS



Mass: 20.Kg/100

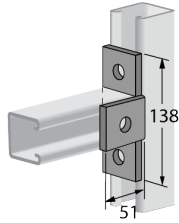
Part Number	Description	Finish
<b>KP1326H</b>	3 hole Bracket	Hot Dip Galvanised



Mass: 50.9Kg/100

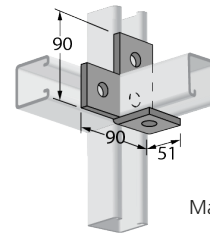
Part Number	Description	Finish
<b>KP2484H</b>	7 Hole Gusseted Bracket	Hot Dip Galvanised

► 90° ANGULAR "Z" BRACKETS



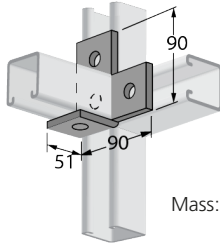
Mass: 29.2Kg/100

Part Number	Description	Finish
<b>KP1033H</b>	Bracket	Hot Dip Galvanised



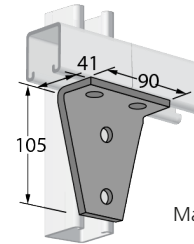
Mass: 20.9Kg/100

Part Number	Description	Finish
<b>KP1034H</b>	Bracket	Hot Dip Galvanised



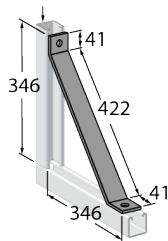
Mass: 29.2Kg/100

Part Number	Description	Finish
<b>KP1035H</b>	Bracket	Hot Dip Galvanised



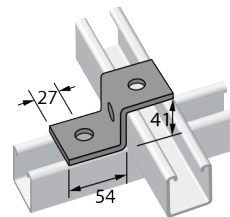
Mass: 40Kg/100

Part Number	Description	Finish
<b>KP1359H</b>	4 hole Bracket	Hot Dip Galvanised



Design Axial Load - 5.36kN  
Mass: 85.9Kg/100

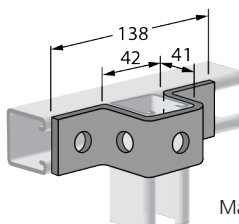
Part Number	Description	Finish
<b>KP2452H</b>	Stay Bracket	Hot Dip Galvanised



Mass: 20.Kg/100

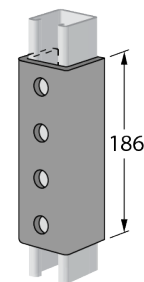
Part Number	Description	Finish
<b>KP1045H</b>	"Z" Bracket	Hot Dip Galvanised

**U BRACKETS**



Mass: 30.9Kg/100

Part Number	Description	Finish
<b>KP1047H</b>	5 hole "U" Bracket	Hot Dip Galvanised



Mass: 95.9Kg/100

Part Number	Description	Finish
<b>KP1377H</b>	4 hole "U" Bracket	Hot Dip Galvanised

**KONNECT FASTENING SYSTEMS ARE PROUD TO STOCK AND PROCURE AUSTRALIA'S LARGEST RANGE OF FASTENERS, HARDWARE, POWER TOOLS & MORE.**

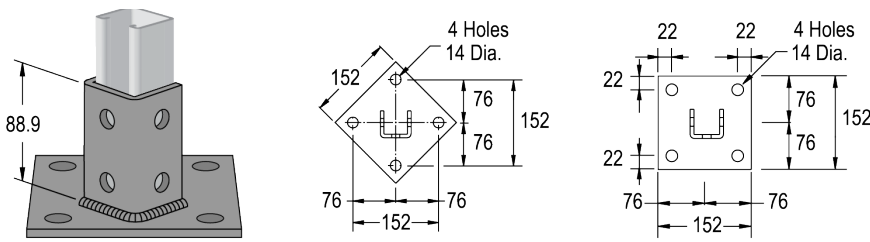
Located in over 30 branches throughout Australia, Konnect Fastening Systems are here to support your business with expert advice and premium products.

1300 KONNECT(566 632) | [KONNECTFASTENINGSYSTEMS.COM.AU](http://KONNECTFASTENINGSYSTEMS.COM.AU)

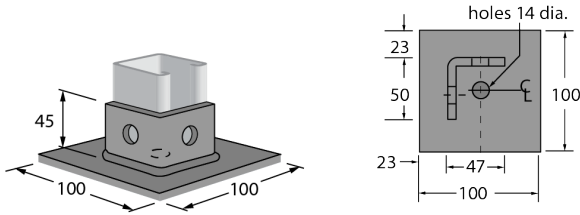




► FLOOR BRACKETS

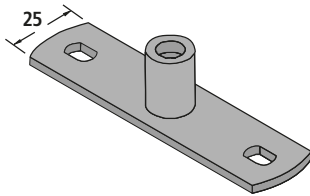


Part Number	Description	Finish
KP2072ASQ	Bracket	Hot Dip Galvanised



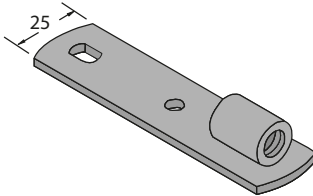
Part Number	Description	Finish
KP2072S1	Bracket	Hot Dip Galvanised

► ROD HANGER CENTRE TYPE



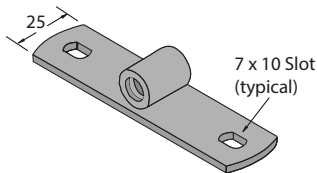
Part Number	Description	Finish
KRH1200A-M10	Rod Hanger Centre M10	Zinc Plated
KRH1200A-M12	Rod Hanger Centre M12	Zinc Plated

► ROD HANGER VERTICAL TYPE



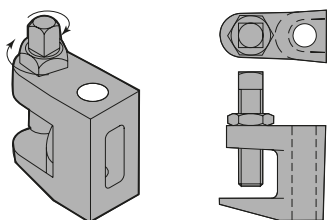
Part Number	Description	Finish
KRH1200B-M10	Rod Hanger Vertical M10	Zinc Plated
KRH1200B-M12	Rod Hanger Vertical M12	Zinc Plated

► ROD HANGER HORIZONTAL TYPE



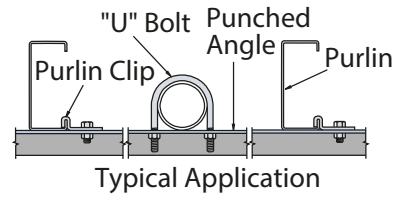
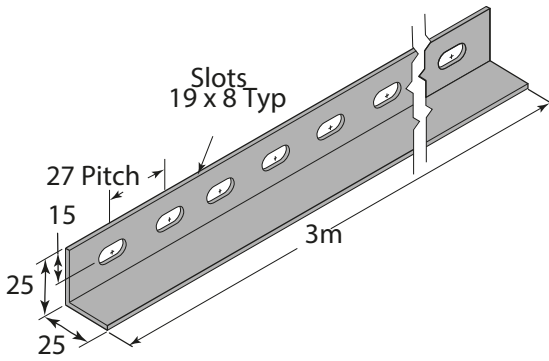
Part Number	Description	Finish
KRH1200C-M10	Rod Hanger Horizontal M10	Zinc Plated
KRH1200C-M12	Rod Hanger Horizontal M12	Zinc Plated

► BEAM CLAMPS

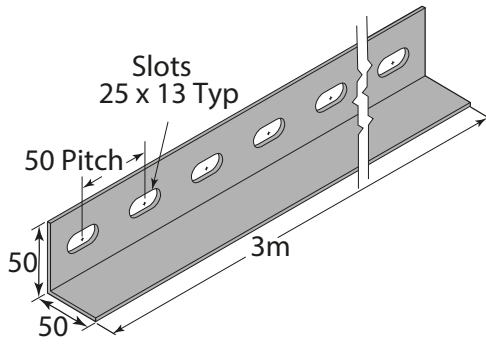


Part Number	Description	Finish
KFL210D	Beam Clamp M10	Zinc Plated
KFL212D	Beam Clamp M12	Zinc Plated

► SLOTTED ANGLE

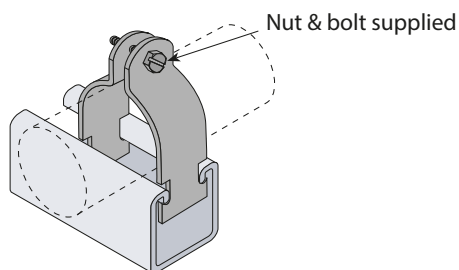


Part Number	Description	Finish
<b>KF1500-HDG</b>	25mm X 25mm X 3m Slotted Angle	Hot Dip Galvanised



Part Number	Description	Finish
<b>KF1550-HDG</b>	50mm X 50mm X 3m Slotted Angle	Hot Dip Galvanised

► LIGHT DUTY PIPE SUPPORT



Part Number	Description	Finish
<b>KP2025</b>	Light Duty Pipe Support 11mm Diameter	Zinc Plated
<b>KP2026</b>	Light Duty Pipe Support 14mm Diameter	Zinc Plated
<b>KP2027</b>	Light Duty Pipe Support 17mm Diameter	Zinc Plated
<b>KP2028</b>	Light Duty Pipe Support 19mm Diameter	Zinc Plated
<b>KP2029</b>	Light Duty Pipe Support 22mm Diameter	Zinc Plated
<b>KP2030</b>	Light Duty Pipe Support 25mm Diameter	Zinc Plated
<b>KP2032</b>	Light Duty Pipe Support 32mm Diameter	Zinc Plated
<b>KP2033</b>	Light Duty Pipe Support 35mm Diameter	Zinc Plated
<b>KP2034</b>	Light Duty Pipe Support 38mm Diameter	Zinc Plated
<b>KP2035</b>	Light Duty Pipe Support 43mm Diameter	Zinc Plated
<b>KP2037</b>	Light Duty Pipe Support 49mm Diameter	Zinc Plated
<b>KP2038</b>	Light Duty Pipe Support 51mm Diameter	Zinc Plated
<b>KP2039</b>	Light Duty Pipe Support 54mm Diameter	Zinc Plated
<b>KP2040</b>	Light Duty Pipe Support 57mm Diameter	Zinc Plated
<b>KP2041</b>	Light Duty Pipe Support 60mm Diameter	Zinc Plated
<b>KP2042</b>	Light Duty Pipe Support 64mm Diameter	Zinc Plated
<b>KP2046</b>	Light Duty Pipe Support 76mm Diameter	Zinc Plated
<b>KP2048</b>	Light Duty Pipe Support 83mm Diameter	Zinc Plated
<b>KP2050</b>	Light Duty Pipe Support 90mm Diameter	Zinc Plated
<b>KP2052</b>	Light Duty Pipe Support 95mm Diameter	Zinc Plated
<b>KP2054</b>	Light Duty Pipe Support 102mm Diameter	Zinc Plated
<b>KP2057</b>	Light Duty Pipe Support 111mm Diameter	Zinc Plated
<b>KP2058</b>	Light Duty Pipe Support 114mm Diameter	Zinc Plated
<b>KP2062</b>	Light Duty Pipe Support 127mm Diameter	Zinc Plated
<b>KP2070</b>	Light Duty Pipe Support 152mm Diameter	Zinc Plated

# YOUR FULL MILWAUKEE STOCKIST

SPEAK WITH YOUR LOCAL KONNECT REP TODAY





► ACCESSORIES



OPTIMIZED PERFORMANCE FOR EVERY TIP TYPE



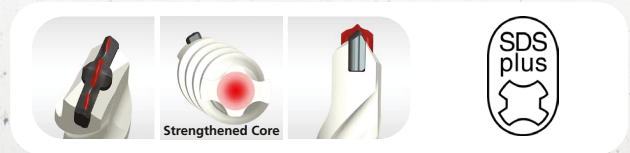
SDS PLUS AND SDS MAX DRIVE  
(4 CUTTER CARBIDE HEAD) DRILL BITS



**FAST, HIGH PERFORMANCE ROTARY DRILLING INTO CONCRETE**

Shallow to deep hole embeddings ■ Longer drill life than 2 cutter head drills ■ Suitable for reinforced concrete ■ SDS PLUS bits: diameters from 5mm to 25mm, length: from 110mm to 450mm ■ SDS MAX bits: diameters from 12mm to 26mm, length from 340mm to 520mm

SDS PLUS DRIVE  
(2 CUTTER CARBIDE HEAD) DRILL BITS



**FOR GENERAL PURPOSE ROTARY DRILLING INTO CONCRETE**

Small to medium diameter hole drilling ■ Self-centering head ■ Excellent swarf removal. Diameters from 5mm to 26mm ■ Length: from 110mm to 450mm.

MILWAUKEE SHOCKWAVE  
IMPACT DUTY DRIVER BITS



SHOCKWAVE  
IMPACT DUTY

PACKOUT™

BUILD YOUR SYSTEM

IP65 UV  
RATED  
PROTECTION

IMPACT  
RESISTANT

FULLY  
CUSTOMISE  
YOUR STORAGE







**P&N QUICKBITS 3-19MM DEBURRING CHAMFER BIT - SMART CHAMFER**

**THIS QUICKBITS SMART CHAMFER** is designed to quickly cut external chamfers on the end of bolts or threaded rods. It can also be used for deburring the end of steel rods, chamfering timber dowels, plastic rods and tubes.

*CHECK OUT KONNECT'S RANGE OF SUTTON TOOLS IN-STORE OR ONLINE*

*suttontool*



**SHOP ALL  
YOUR ABRASIVE  
NEEDS WITH  
KONNECT**

**RAISING THE STANDARD  
REDUCING THE COST**

► **SLEEVE ANCHORS (HEX HEAD)**



Part Number	Description	Finish
<b>KSA10040G</b>	Konnect Sleeve Anchor Hex 10x40	Galvanised
<b>KSA10050G</b>	Konnect Sleeve Anchor Hex 10x50	Galvanised
<b>KSA10075G</b>	Konnect Sleeve Anchor Hex 10x75	Galvanised
<b>KSA10100G</b>	Konnect Sleeve Anchor Hex 10x100	Galvanised
<b>KSA12060G</b>	Konnect Sleeve Anchor Hex 12x60	Galvanised
<b>KSA12070G</b>	Konnect Sleeve Anchor Hex 12x70	Galvanised
<b>KSA12100G</b>	Konnect Sleeve Anchor Hex 12x100	Galvanised
<b>KSA16065G</b>	Konnect Sleeve Anchor Hex 16x65	Galvanised
<b>KSA16110G</b>	Konnect Sleeve Anchor Hex 16x110	Galvanised

Part Number	Description	Finish
<b>KSA10050SS</b>	Konnect Sleeve Anchor Hex 10x50	G316 Stainless
<b>KSA10075SS</b>	Konnect Sleeve Anchor Hex 10x75	G316 Stainless
<b>KSA12060SS</b>	Konnect Sleeve Anchor Hex 12x60	G316 Stainless
<b>KSA12070SS</b>	Konnect Sleeve Anchor Hex 12x70	G316 Stainless
<b>KSA12100SS</b>	Konnect Sleeve Anchor Hex 12x100	G316 Stainless
<b>KSA10040</b>	Konnect Sleeve Anchor Hex 10x40	Zinc Plated
<b>KSA10050</b>	Konnect Sleeve Anchor Hex 10x50	Zinc Plated
<b>KSA10075</b>	Konnect Sleeve Anchor Hex 10x75	Zinc Plated
<b>KSA10100</b>	Konnect Sleeve Anchor Hex 10x100	Zinc Plated
<b>KSA12060</b>	Konnect Sleeve Anchor Hex 12x60	Zinc Plated
<b>KSA12070</b>	Konnect Sleeve Anchor Hex 12x70	Zinc Plated
<b>KSA12100</b>	Konnect Sleeve Anchor Hex 12x100	Zinc Plated
<b>KSA16065</b>	Konnect Sleeve Anchor Hex 16x65	Zinc Plated
<b>KSA16110</b>	Konnect Sleeve Anchor Hex 16x110	Zinc Plated

► **THROUGH BOLTS**



Part Number	Description	Finish
<b>KTB12080G</b>	Konnect Through Bolt Anchor 12x80	Galvanised
<b>KTB12100G</b>	Konnect Through Bolt Anchor 12x100	Galvanised
<b>KTB12140G</b>	Konnect Through Bolt Anchor 12x140	Galvanised
<b>KTB16100G</b>	Konnect Through Bolt Anchor 16x100	Galvanised
<b>KTB16125G</b>	Konnect Through Bolt Anchor 16x125	Galvanised
<b>KTB20120G</b>	Konnect Through Bolt Anchor 20x120	Galvanised

Part Number	Description	Finish
<b>KTB12080</b>	Konnect Through Bolt Anchor 12x80	Zinc Plated
<b>KTB12100</b>	Konnect Through Bolt Anchor 12x100	Zinc Plated
<b>KTB12140</b>	Konnect Through Bolt Anchor 12x140	Zinc Plated
<b>KTB16100</b>	Konnect Through Bolt Anchor 16x100	Zinc Plated
<b>KTB16125</b>	Konnect Through Bolt Anchor 16x125	Zinc Plated
<b>KTB20120</b>	Konnect Through Bolt Anchor 20x120	Zinc Plated

► **SCREW BOLTS**



Part Number	Description	Finish
<b>KSB06050G</b>	Konnect Screw Bolt Anchor Hex 6.5x50 (Base material Drill size 6.5mm)	Galvanised
<b>KSB08060G</b>	Konnect Screw Bolt Anchor Hex 8x60	Galvanised
<b>KSB10060G</b>	Konnect Screw Bolt Anchor Hex 10x60	Galvanised
<b>KSB10075G</b>	Konnect Screw Bolt Anchor Hex 10x75	Galvanised
<b>KSB10100G</b>	Konnect Screw Bolt Anchor Hex 10x100	Galvanised
<b>KSB12075G</b>	Konnect Screw Bolt Anchor Hex 12x75	Galvanised
<b>KSB12100G</b>	Konnect Screw Bolt Anchor Hex 12x100	Galvanised
<b>KSB12150G</b>	Konnect Screw Bolt Anchor Hex 12x150	Galvanised

Part Number	Description	Finish
<b>KSB06030</b>	Konnect Screw Bolt Anchor Hex 6.5 x 30	Zinc Plated
<b>KSB06050</b>	Konnect Screw Bolt Anchor Hex 6.5x50	Zinc Plated
<b>KSB08060</b>	Konnect Screw Bolt Anchor Hex 8x60	Zinc Plated
<b>KSB10060</b>	Konnect Screw Bolt Anchor Hex 10x60	Zinc Plated
<b>KSB10075</b>	Konnect Screw Bolt Anchor Hex 10x75	Zinc Plated
<b>KSB10100</b>	Konnect Screw Bolt Anchor Hex 10x100	Zinc Plated
<b>KSB12075</b>	Konnect Screw Bolt Anchor Hex 12x75	Zinc Plated
<b>KSB12100</b>	Konnect Screw Bolt Anchor Hex 12x100	Zinc Plated
<b>KSB12150</b>	Konnect Screw Bolt Anchor Hex 12x150	Zinc Plated
<b>27055-PWR</b>	BT10x100 HEX SCREWBOLT ETA1	Zinc Plated
<b>27335-PWR</b>	BT10x100 CSK SCREWBOLT ETA1	Zinc Plated
<b>27345-PWR</b>	BT12x100 CSK SCREWBOLT ETA1	Zinc Plated
<b>27350-PWR</b>	BT12x150 CSK SCREWBOLT ETA1	Zinc Plated

► **THREADED ROD HANGERS**



Part Number	Description
<b>HSDIM10</b>	Powers 10 Hollow Set Drop-In Anchor
<b>24604-PWR</b>	Powers Wedge Anchor / Drop-In ZC 10x40
<b>HM6M1040-PWR</b>	Hangermate™ M10 6mm x 40mm
<b>LPD10M</b>	Powers Lipped Drop in Anchor M10
<b>LPD10M-BUCKET-PWR</b>	Lipped Drop In Anchor M10x30mm 500 pce (2 x Drill Bits & 1 Tool)
<b>LPD12M</b>	Powers Lipped Drop in Anchor M12
<b>LPD12M-BUCKET-PWR</b>	Lipped Drop In Anchor M12x50mm Bucket 300pc (2 x Drill Bits & 1 Tool)
<b>10MZPLDIA</b>	Lipped Drop In Anchor Zp M10

▶ HEX NUTS



Size	Low Tensile -Class 5		Hi Tensile - Class 8		Stainless	
	Zinc Plated	HDG	Zinc Plated	HDG	G304	G316
M6	6MZPN	6MGN	6M8ZPN	6M8GN	6MG304N	6MG316N
M8	8MZPN	8MGN	8M8ZPN	8M8GN	8MG304N	8MG316N
M10	10MZPN	10MGN	10M8ZPN	10M8GN	10MG304N	10MG316N
M12	12MZPN	12MGN	12M8ZPN	12M8GN	12MG304N	12MG316N
M16	16MZPN	16MGN	16M8ZPN	16M8GN	16MG304N	16MG316N
M20	20MZPN	20MGN	20M8ZPN	20M8GN	20MG304N	20MG316N
M24	24MZPN	24MGN	24M8ZPN	24M8GN	24MG304N	24MG316N

▶ MUDGUARD WASHERS



Size	Zinc Plated	Dimensions
M6	6MZPEW	M6 x 12.5 x 1.2mm
M8	8MZPEW	M8 x 17 x 1.2mm
M10	10MZPEW	M10 x 21 x 1.6mm
M12	12MZPEW	M12 x 24 x 1.6mm
M16	16MZPEW	M16 x 30 x 2mm
M20	20MZPEW	M20 x 37 x 2mm
M24	24MZPEW	M24 x 44 x 2mm

▶ SPRING WASHERS - FLAT SECTION



Size	Dimensions	Zinc Plated	HDG
M6	M8 x 2.5 x 1.6mm	6MSW	6MGSW
M8	M8 x 3 x 2mm	8MSW	8MGSW
M10	M10 x 3.5 x 2.2mm	10MSW	10MGSW
M12	M12 x 4 x 2.5mm	12MSW	12MGSW
M16	M16 x 5 x 3.5mm	16MSW	16MGSW
M20	M20 x 6 x 4mm	20MSW	20MGSW
M24	M24 x 7 x 5mm	24MSW	24MGSW

▶ ROD COUPLERS - LOW TENSILE



Size	Zinc Plated	HDG
M6	6MRC	
M8	8MRC	
M10	10MRC	10MGRC
M12	12MRC	12MGRC
M16	16MRC	16MGRC
M20	20MRC	20MGRC
M24	24MRC	24MGRC

▶ THREADED ROD - CLASS 4.8 - 3M LENGTH



Size	Zinc Plated	HDG	Stainless G304
M6	6X3MZPTR	6X3MGTR	6X3MG304TR
M8	8X3MZPTR	8X3MGTR	8X3MG304TR
M10	10X3MZPTR	10X3MGTR	10X3MG304TR
M12	12X3MZPTR	12X3MGTR	12X3MG304TR
M16	16X3MZPTR	16X3MGTR	16X3MG304TR
M20	20X3MZPTR	20X3MGTR	20X3MG304TR
M24	24X3MZPTR	24X3MGTR	24X3MG304TR

▶ THREADED ROD - CLASS 4.8 - 1M LENGTH



Size	Zinc Plated	HDG	Stainless G304
M6	6X1MZPTR	6X1MGTR	6X1MG304TR
M8	8X1MZPTR	8X1MGTR	8X1MG304TR
M10	10X1MZPTR	10X1MGTR	10X1MG304TR
M12	12X1MZPTR	12X1MGTR	12X1MG304TR
M16	16X1MZPTR	16X1MGTR	16X1MG304TR
M20	20X1MZPTR	20X1MGTR	20X1MG304TR
M24	24X1MZPTR	24X1MGTR	24X1MG304TR

▶ THREADED ROD - CLASS 8.8 - 3M LENGTH



Size	Zinc Plated	HDG	Stainless G316
M6	6X3MZPSAMTR	6X3MGSAMTR	6X3MG316TR
M8	8X3MZPSAMTR	8X3MGSAMTR	8X3MG316TR
M10	10X3MZPSAMTR	10X3MGSAMTR	10X3MG316TR
M12	12X3MZPSAMTR	12X3MGSAMTR	12X3MG316TR
M16	16X3MZPSAMTR	16X3MGSAMTR	16X3MG316TR
M20	20X3MZPSAMTR	20X3MGSAMTR	20X3MG316TR
M24	24X3MZPSAMTR	24X3MGSAMTR	24X3MG316TR

▶ THREADED ROD - CLASS 8.8 - 1M LENGTH



Size	Zinc Plated	HDG	Stainless G316
M6	6X1MZPSAMTR	6X1MGSAMTR	6X1MG316TR
M8	8X1MZPSAMTR	8X1MGSAMTR	8X1MG316TR
M10	10X1MZPSAMTR	10X1MGSAMTR	10X1MG316TR
M12	12X1MZPSAMTR	12X1MGSAMTR	12X1MG316TR
M16	16X1MZPSAMTR	16X1MGSAMTR	16X1MG316TR
M20	20X1MZPSAMTR	20X1MGSAMTR	20X1MG316TR
M24	24X1MZPSAMTR	24X1MGSAMTR	24X1MG316TR



# safety 1<sup>ST</sup>

• THINK SAFE • ACT SAFE • STAY SAFE



## KONNECT<sup>®</sup>

FASTENING SYSTEMS

## COVERING ALL YOUR SAFETY NEEDS

Paramount  
SAFETY PRODUCTS

Ansell

uvex

MOLDEX  
Ideas that wear well.

BEAVER  
BRANDS

Milwaukee



**INDEX PART NUMBERS**

Part Number.....	Page	Part Number.....	Page
6M8GN	15	12X1MZPTR	15
6M8ZPN	15	12X3MG304TR	15
6MG304N	15	12X3MG316TR	15
6MG316N	15	12X3MGSAMTR	15
6MGN	15	12X3MGTR	15
6MGSW	15	12X3MZPSAMTR	15
6MRC	15	12X3MZPTR	15
6MSW	15	16M8GN	15
6MZPEW	15	16M8ZPN	15
6MZPN	15	16MG304N	15
6X1MG304TR	15	16MG316N	15
6X1MG316TR	15	16MGN	15
6X1MGSAMTR	15	16MGRC	15
6X1MGTR	15	16MGSW	15
6X1MZPSAMTR	15	16MRC	15
6X1MZPTR	15	16MSW	15
6X3MG304TR	15	16MZPEW	15
6X3MG316TR	15	16MZPN	15
6X3MGSAMTR	15	16X1MG304TR	15
6X3MGTR	15	16X1MG316TR	15
6X3MZPSAMTR	15	16X1MGSAMTR	15
6X3MZPTR	15	16X1MGTR	15
8M8GN	15	16X1MZPSAMTR	15
8M8ZPN	15	16X1MZPTR	15
8MG304N	15	16X3MG304TR	15
8MG316N	15	16X3MG316TR	15
8MGN	15	16X3MGSAMTR	15
8MGSW	15	16X3MGTR	15
8MRC	15	16X3MZPSAMTR	15
8MSW	15	16X3MZPTR	15
8MZPEW	15	20M8GN	15
8MZPN	15	20M8ZPN	15
8X1MG304TR	15	20MG304N	15
8X1MG316TR	15	20MG316N	15
8X1MGSAMTR	15	20MGN	15
8X1MGTR	15	20MGRC	15
8X1MZPSAMTR	15	20MGSW	15
8X1MZPTR	15	20MRC	15
8X3MG304TR	15	20MSW	15
8X3MG316TR	15	20MZPEW	15
8X3MGSAMTR	15	20MZPN	15
8X3MGTR	15	20X1MG304TR	15
8X3MZPSAMTR	15	20X1MG316TR	15
8X3MZPTR	15	20X1MGSAMTR	15
10M8GN	15	20X1MGTR	15
10M8ZPN	15	20X1MZPSAMTR	15
10MG304N	15	20X1MZPTR	15
10MG316N	15	20X3MG304TR	15
10MGN	15	20X3MG316TR	15
10MGRC	15	20X3MGSAMTR	15
10MGSW	15	20X3MGTR	15
10MRC	15	20X3MZPSAMTR	15
10MSW	15	20X3MZPTR	15
10MZPEW	15	24M8GN	15
10MZPLDIA	14	24M8ZPN	15
10MZPN	15	24MG304N	15
10X1MG304TR	15	24MG316N	15
10X1MG316TR	15	24MGN	15
10X1MGSAMTR	15	24MGRC	15
10X1MGTR	15	24MGSW	15
10X1MZPSAMTR	15	24MRC	15
10X1MZPTR	15	24MSW	15
10X3MG304TR	15	24MZPEW	15
10X3MG316TR	15	24MZPN	15
10X3MGSAMTR	15	24X1MG304TR	15
10X3MGTR	15	24X1MG316TR	15
10X3MZPSAMTR	15	24X1MGSAMTR	15
10X3MZPTR	15	24X1MGTR	15
12M8GN	15	24X1MZPSAMTR	15
12M8ZPN	15	24X1MZPTR	15
12MG304N	15	24X3MG304TR	15
12MG316N	15	24X3MG316TR	15
12MGN	15	24X3MGSAMTR	15
12MGRC	15	24X3MGTR	15
12MGSW	15	24X3MZPSAMTR	15
12MRC	15	24X3MZPTR	15
12MSW	15	24604-PWR	14
12MZPEW	15	24610-PWR	14
12MZPN	15	27055-PWR	14
12X1MG304TR	15	27335-PWR	14
12X1MG316TR	15	27345-PWR	14
12X1MGSAMTR	15	27350-PWR	14
12X1MGTR	15	HSDIM10	14
12X1MZPSAMTR	15	KF1500-HDG	10



Part Number.....	Page	Part Number.....	Page
KF1550-HDG	10	KRH1200C-M10	09
KFL210D	09	KRH1200C-M12	09
KFL212D	09	KSA10040	14
KP207ASQ	09	KSA10040G	14
KP1000-GB	04	KSA10050	14
KP1000-HG	04	KSA10050G	14
KP1000T-GB	04	KSA10050SS	14
KP1000T-HG	04	KSA10075	14
KP1006SS	06	KSA10075G	14
KP1007	06	KSA10075SS	14
KP1007H	06	KSA10100	14
KP1007SS	06	KSA10100G	14
KP1008	06	KSA12060	14
KP1008H	06	KSA12060G	14
KP1008SS	06	KSA12060SS	14
KP1010	06	KSA12070	14
KP1010H	06	KSA12070G	14
KP1013SS	06	KSA12070SS	14
KP1026	06	KSA12100	14
KP1031H	07	KSA12100G	14
KP1033	08	KSA12100SS	14
KP1034	08	KSA16065	14
KP1035	08	KSA16065G	14
KP1036H	07	KSA16110	14
KP1045	08	KSA16110G	14
KP1047	08	KSB06030	14
KP1065	07	KSB06050	14
KP1066	07	KSB06050G	14
KP1067	07	KSB08060	14
KP1325	06	KSB08060G	14
KP1326H	07	KSB10060	14
KP1354	06	KSB10060G	14
KP1359	08	KSB10075	14
KP1377	08	KSB10075G	14
KP1843	06	KSB10100	14
KP2000T-GB	04	KSB10100G	14
KP2025	10	KSB12075	14
KP2026	10	KSB12075G	14
KP2027	10	KSB12100	14
KP2028	10	KSB12100G	14
KP2029	10	KSB12150	14
KP2030	10	KSB12150G	14
KP2032	10	KT3-150GB	05
KP2033	10	KT3-300GB	05
KP2034	10	KT3-450GB	05
KP2035	10	KT3HDB	05
KP2037	10	KT3LP	05
KP2038	10	KT3RP	05
KP2039	10	KT3SP	05
KP2040	10	KT3TG	05
KP2041	10	KT3TG	05
KP2042	10	KT3TG	05
KP2044	10	KTB12080	14
KP2046	10	KTB12080G	14
KP2048	10	KTB12100	14
KP2050	10	KTB12100G	14
KP2052	10	KTB12140	14
KP2054	10	KTB12140G	14
KP2057	10	KTB16100	14
KP2058	10	KTB16100G	14
KP2062	10	KTB16125	14
KP2070	10	KTB16125G	14
KP2072S1	09	KTB20120	14
KP2452	08	KTB20120G	14
KP2484H	07	LPD10M	14
KP2542	06	LPD10M-BUCKET	14
KP2543	06	LPD12M	14
KP2544	06		
KP2545	06		
KP2546	06		
KP3300T-GB	04		
KP4000T-GB	04		
KP2663250	07		
KP2663400	07		
KP2663550	07		
KP2663700	07		
KPCL150H	07		
KPCL300H	07		
KPCL450H	07		
KPCL600H	07		
KRH1200A-M10	09		
KRH1200A-M12	09		
KRH1200B-M10	09		
KRH1200B-M12	09		

QUEENSLAND	TELEPHONE	OPENING HOURS
<b>BRENDALE</b> 61 Kremzow Road, Brendale QLD 4500	(07) 3265 6111	<b>Monday to Friday</b> - 7:00am to 4:00pm
<b>CAIRNS</b> 248 Hartley Street Bungalow QLD 4870	(07) 4035 5600	<b>Monday to Friday</b> - 7:30am to 4:00pm
<b>GLADSTONE</b> 118 Hanson Road, Gladstone QLD 4680	(07) 4972 5511	<b>Monday to Friday</b> - 7:30am to 4:00pm
<b>GOLD COAST</b> 34 Taree Street, West Burleigh QLD 4220	(07) 5593 6588	<b>Monday to Friday</b> - 7:00am to 4:00pm
<b>MACKAY</b> 7B Progress Drive, Paget QLD 4740	(07) 4952 6867	<b>Monday to Friday</b> - 7:30am to 4:00pm
<b>MOUNT ISA</b> 47 West Street, Mount Isa QLD 4825	(07) 4743 9788	<b>Monday to Friday</b> - 7:30am to 4:00pm
<b>PINKENBA</b> Building 2/660 MacArthur Avenue, Pinkenba QLD 4008	(07) 3291 8200	<b>Monday to Friday</b> - 7:00am to 4:00pm
<b>ROCKHAMPTON</b> Unit 2/223 Denison St, Rockhampton QLD 4700	(07) 4921 7300	<b>Monday to Friday</b> - 7:30am to 4:00pm
<b>SUNSHINE COAST</b> 12A Robert Drive, Kunda Park QLD 4556	(07) 5451 0388	<b>Monday to Friday</b> - 7:00am to 4:00pm
<b>TOOWOOMBA</b> 10 Tradewinds Court, Toowoomba QLD 4350	(07) 4633 1777	<b>Monday to Friday</b> - 7:30am to 4:00pm
<b>TOWNSVILLE</b> 92-94 Duckworth Street, Garbutt, Townsville QLD 4814	(07) 4728 6633	<b>Monday to Friday</b> - 7:30am to 4:00pm
<b>WACOL</b> Unit 1/1318 Boundary Road, Wacol QLD 4076	(07) 3879 3043	<b>Monday to Friday</b> - 7:30am to 4:00pm
NEW SOUTH WALES	TELEPHONE	OPENING HOURS
<b>ALEXANDRIA</b> Unit 2, 64-66 Burrows Road, Alexandria NSW 2015	(02) 9698 9566	<b>Monday to Friday</b> - 7:00am to 4:30pm
<b>ARTARMON</b> 58 Whiting Street, Artarmon NSW 2064	(02) 9438 3677	<b>Monday to Friday</b> - 7:00am to 4:00pm
<b>LISMORE</b> Unit 1/7 Krauss Avenue, South Lismore NSW 2480	(02) 6621 9677	<b>Monday to Friday</b> - 7:00am to 4:30pm
<b>NEWCASTLE</b> Unit 1/4 Birraba Avenue Beresfield NSW 2322	(02) 4966 3002	<b>Monday to Friday</b> - 7:30am to 4:30pm
<b>ORANGE</b> 203 Byng Street, Orange NSW 2800	(02) 6369 1622	<b>Monday to Friday</b> - 7:30am to 4:30pm
<b>TAMWORTH</b> 60 Dampier Street, Tamworth NSW 2340	(02) 6763 8600	<b>Monday to Friday</b> - 7:30am to 4:30pm
<b>WAGGA</b> 9 Dobney Avenue, Wagga NSW 2650	(02) 6925 6700	<b>Monday to Friday</b> - 7:30am to 4:30pm
<b>WETHERILL PARK</b> 6 Nello Place Wetherill Park NSW 2164	(02) 9616 6100	<b>Monday to Friday</b> - 7:30am to 4:30pm
<b>WOLLONGONG</b> 140 Church Street Wollongong NSW 2500	(02) 4225 3744	<b>Monday to Friday</b> - 7:30am to 4:30pm
AUSTRALIAN CAPITAL TERRITORY	TELEPHONE	OPENING HOURS
<b>CANBERRA</b> Unit 5/19 Tennant Street, Fyshwick ACT 2609	(02) 6192 6000	<b>Monday to Friday</b> - 7:30am to 4:30pm
VICTORIA	TELEPHONE	OPENING HOURS
<b>CAMPBELLFIELD</b> Unit 8/1880 Hume Highway Campbellfield VIC 3061	(03) 9357 2755	<b>Monday to Friday</b> - 7:30am to 4:30pm
<b>DANDENONG</b> Unit 5/2 Indian Drive Keysborough VIC 3173	(03) 9793 3644	<b>Monday to Friday</b> - 7:30am to 4:30pm
<b>GEELONG</b> 18A Tarkin Court, Bell Park, Geelong VIC 3215	(03) 5277 2063	<b>Monday to Friday</b> - 7:30am to 4:30pm
<b>LAVERTON</b> Unit 4/151 Dohertys Road, Laverton VIC 3026	(03) 9368 7955	<b>Monday to Friday</b> - 7:30am to 4:30pm
<b>MILDURA</b> 53 Seventh Street East, Mildura VIC 3500	(03) 5021 2311	<b>Monday to Friday</b> - 7:30am to 4:30pm
<b>SHEPPARTON</b> 84 Benalla Road, Shepparton VIC 3630	(03) 5831 2577	<b>Monday to Friday</b> - 7:30am to 4:30pm
TASMANIA	TELEPHONE	OPENING HOURS
<b>HOBART</b> 71B Charles Street, Moonah TAS 7009	(03) 6272 8794	<b>Monday to Friday</b> - 7:30am to 4:30pm
SOUTH AUSTRALIA	TELEPHONE	OPENING HOURS
<b>LONSDALE</b> 6 Aldershot Road, Lonsdale SA 5160	(08) 8326 4122	<b>Monday to Friday</b> - 8:00am to 4:30pm
<b>MOUNT GAMBIER</b> 321 Commercial St W, Mount Gambier SA 5290	(08) 8723 8300	<b>Monday to Friday</b> - 7:30am to 4:30pm
<b>WINGFIELD</b> 13 Rosberg Road, Wingfield SA 5013	(08) 8300 8700	<b>Monday to Friday</b> - 7:30am to 4:30pm
WESTERN AUSTRALIA	TELEPHONE	OPENING HOURS
<b>BIBRA LAKE</b> Unit 2/13 Discovery Drive, Bibra Lake WA 6163	(08) 9331 2455	<b>Mon to Thurs</b> - 7:30am to 4:30pm; <b>Fri</b> - 7:30am to 4:00pm
<b>BUNBURY</b> Corner Proffit Street & Wilson Road, Bunbury WA 6230	(08) 9724 2500	<b>Mon to Thurs</b> - 7:30am to 4:30pm; <b>Fri</b> - 7:30am to 4:00pm
<b>KALGOORLIE</b> 200 Boulder Road South Kalgoorlie WA 6430	(08) 9021 9550	<b>Monday to Friday</b> - 7:30am to 4:30pm
<b>KWINANA</b> 36 Mandurah Road, Kwinana WA 6167	(08) 9439 7000	<b>Mon to Thurs</b> - 7:30am to 4:30pm; <b>Fri</b> - 7:30am to 3:30pm
<b>OSBORNE PARK</b> Unit 1B/15 Hector Street West, Osborne Park WA 6017	(08) 9244 4555	<b>Mon to Thurs</b> - 7:00am to 4:00pm; <b>Fri</b> - 7:00am to 3:30pm
<b>REDCLIFFE</b> Gate 4, 52 Redcliffe Rd, Redcliffe WA 6104	(08) 9350 3624	<b>Mon to Thurs</b> - 7:00am to 4:30pm; <b>Fri</b> - 7:00am to 4:00pm

CURRENT AS OF 15-07-2022 . Branch Listings may have changed from time and date of printing & distribution. For an up to date version, please visit our websites.



**FROM FOUNDATIONS TO FINISH**

**1300 KONNECT (566 632) | KONNECTFASTENINGSYSTEMS.COM.AU**